



48

DUFOUR

CATAMARANS





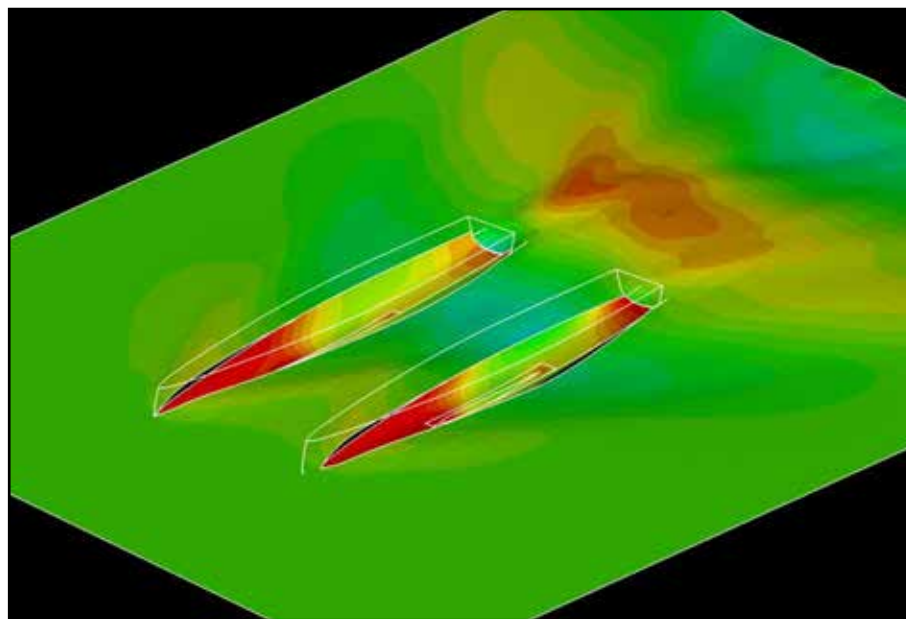
The essence of Dufour identity

“ We have developped this project with the vision to match an elegant and comfortable catamaran with outstanding sailing abilities.”





Elegant and modern design
from Felci Yachts
Dufour partner since 2002



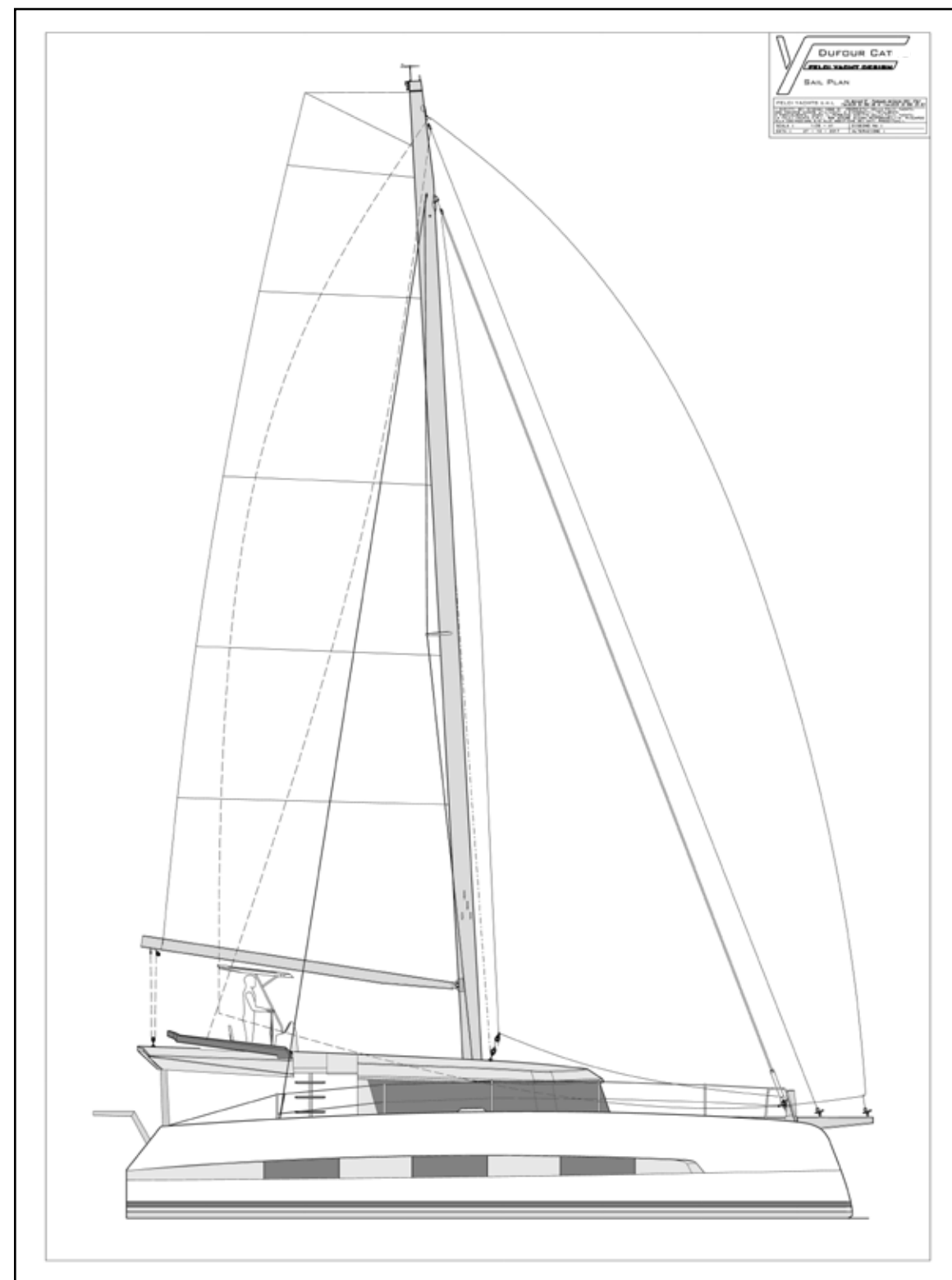
Most advanced CFD analysis techniques have
highlighted top level hull characteristics and
ensure outstanding sailing performances.



Full sandwich construction for maximum
weight loss and hull stiffness



Excellent ratio between
exterior and interior space

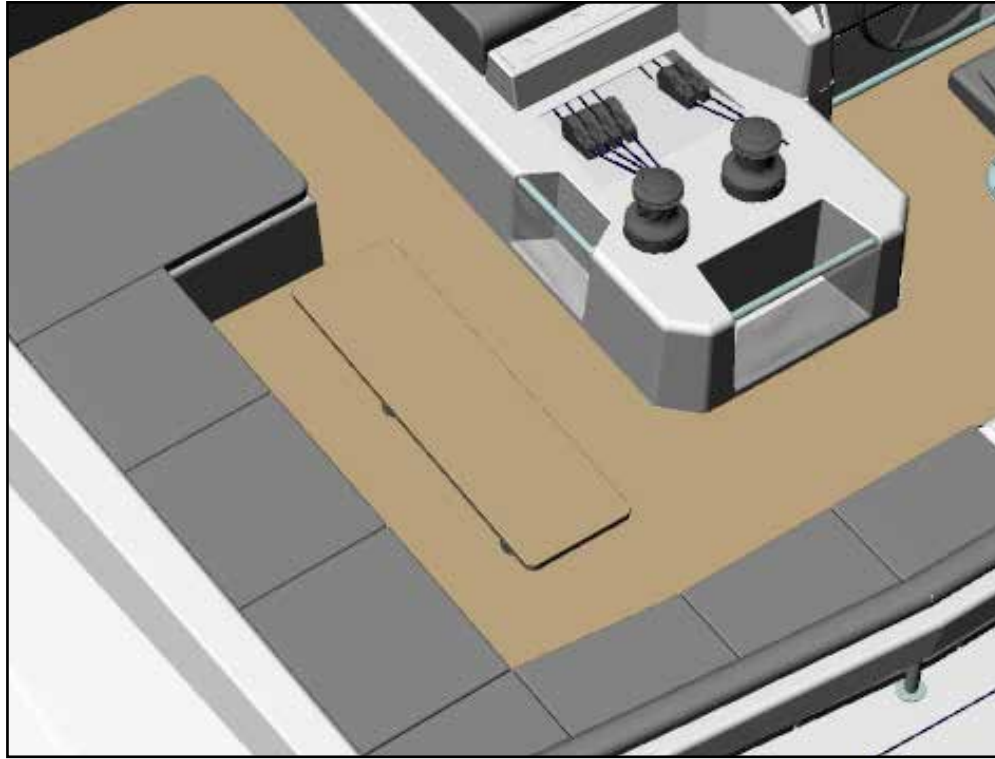


Powerful sail plan



Flybridge cockpit extension

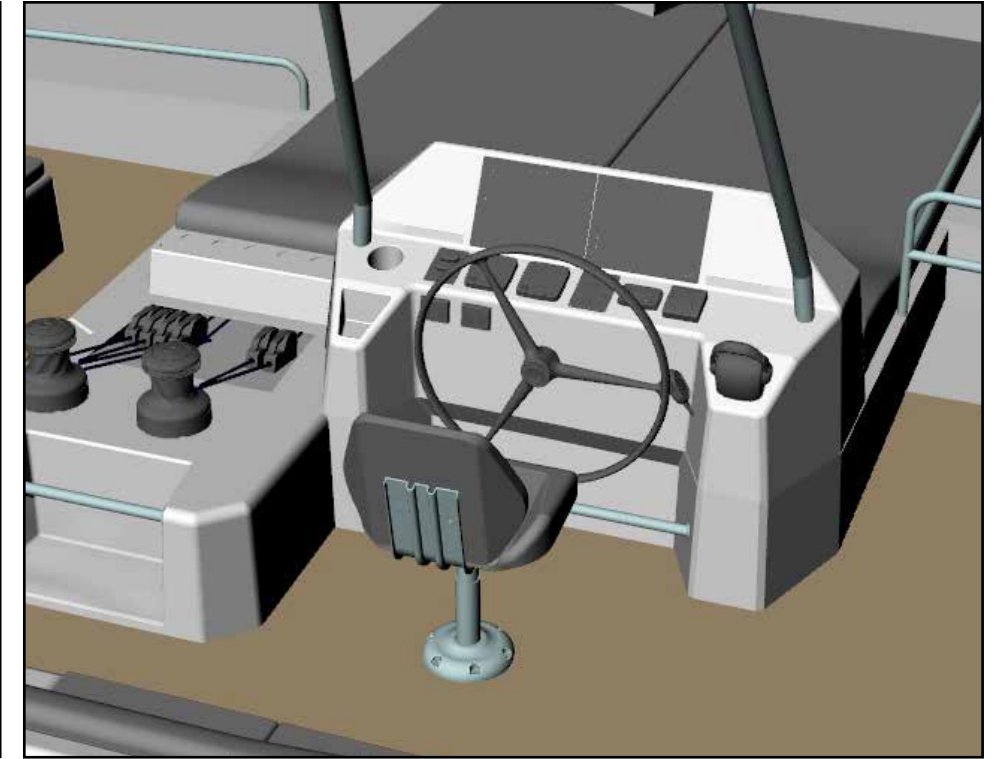




1 Second cockpit with table



2 Wide sunbaths area all around



3 Upscaled helm station

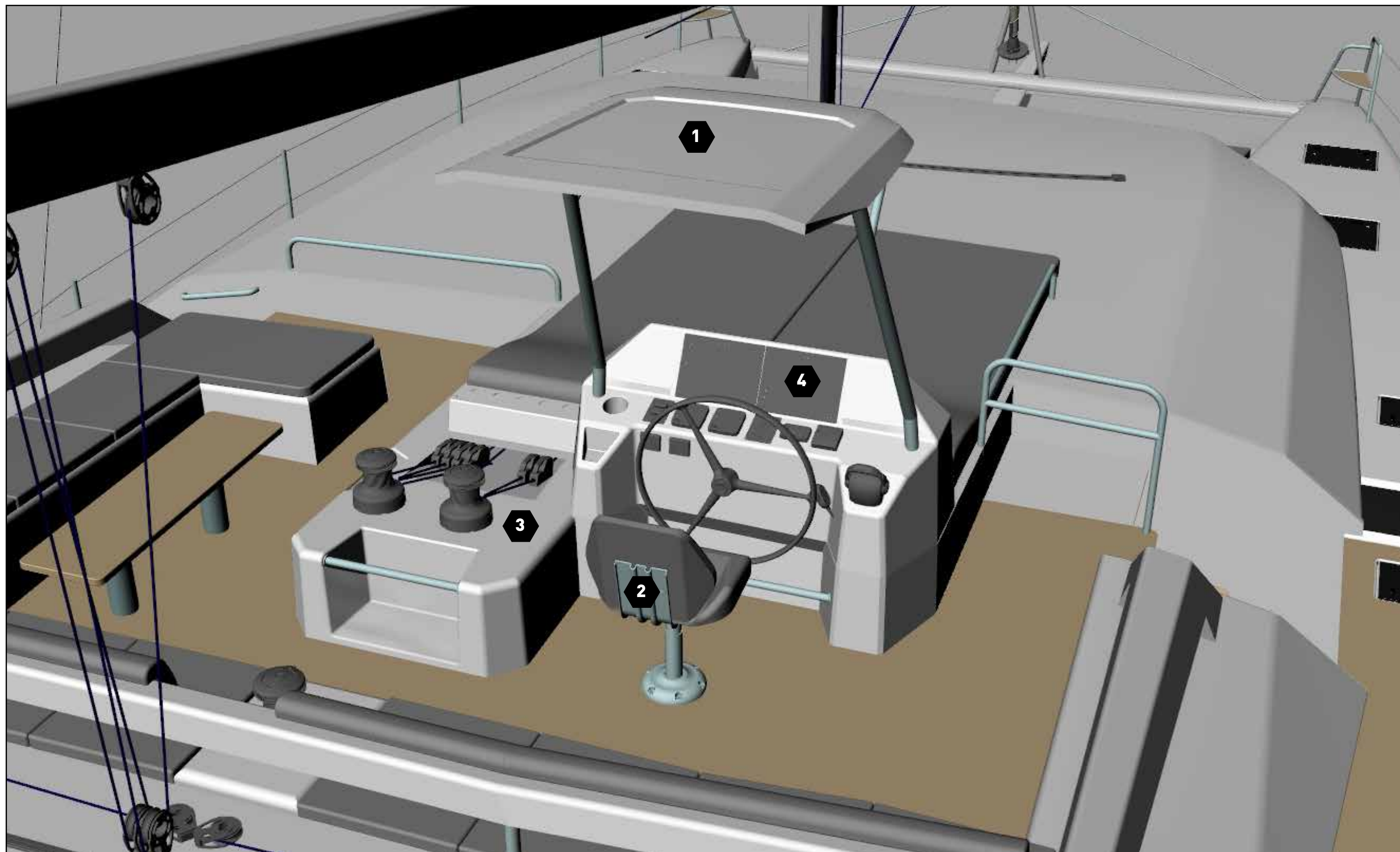


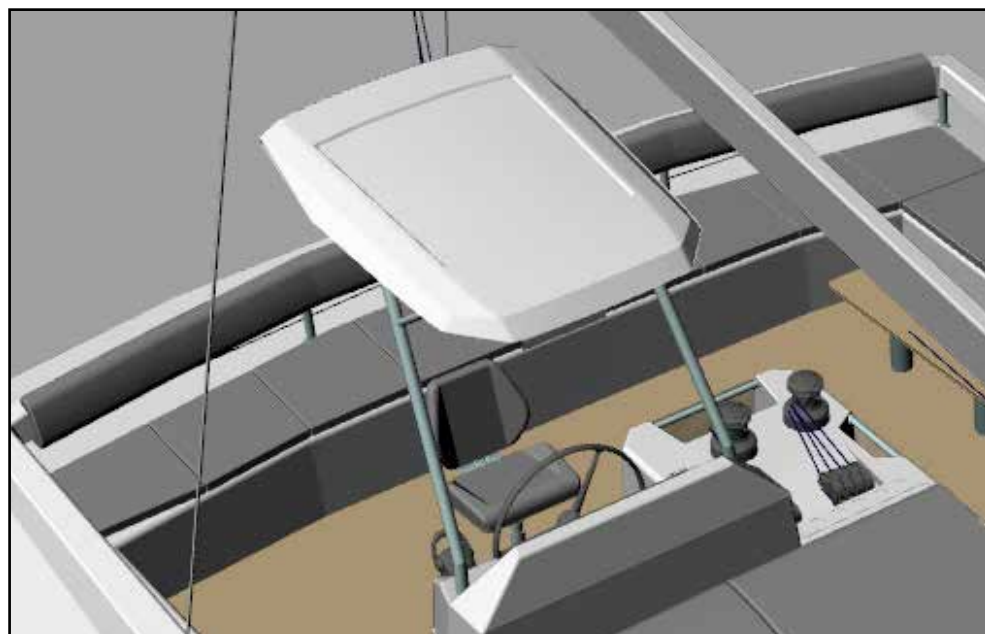
4 Double stairs access
 <- from cockpit to fly at starbord
 -> from sidedeck to fly on port side





Visibility and full helm control

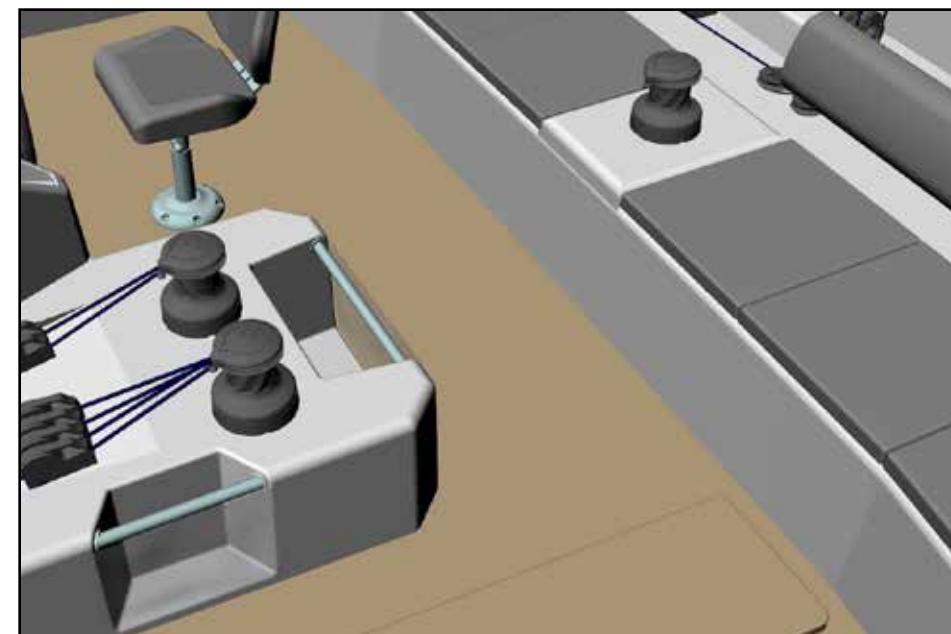




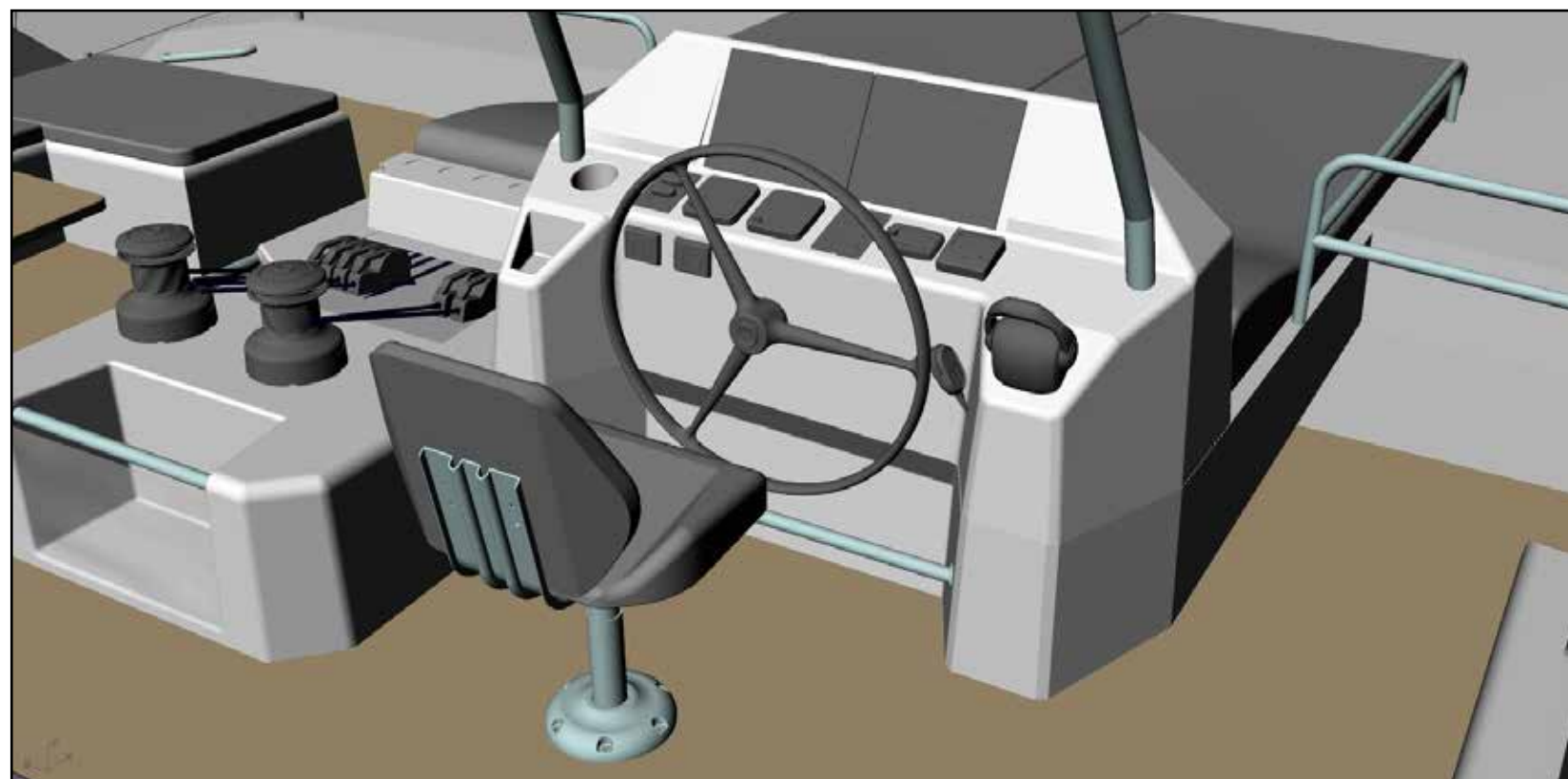
1 Skipper hardtop



2 Adjustable skipper seat



3 Complete winches manoeuvring and electric main sail traveller



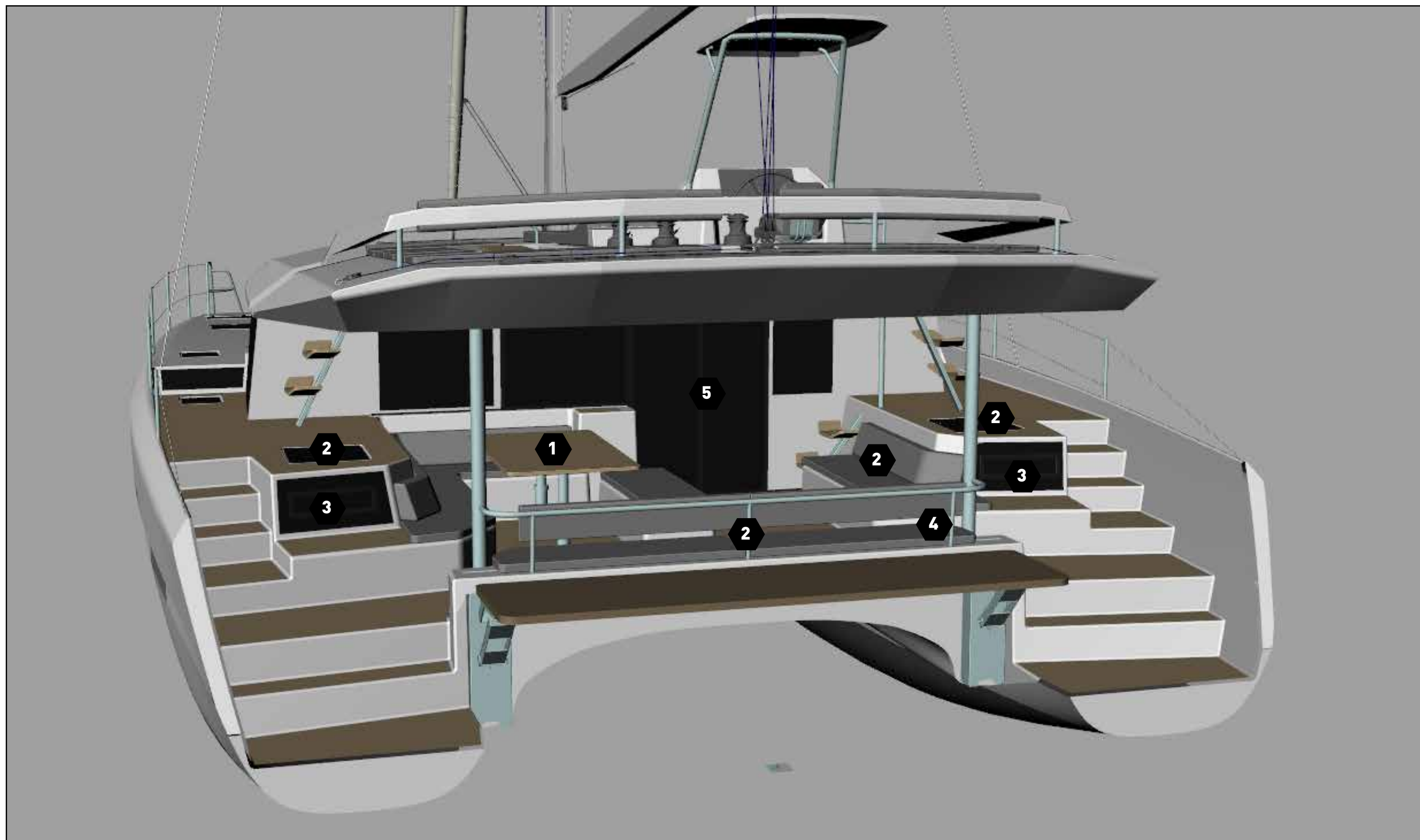
4 Clean and flush equipment integration

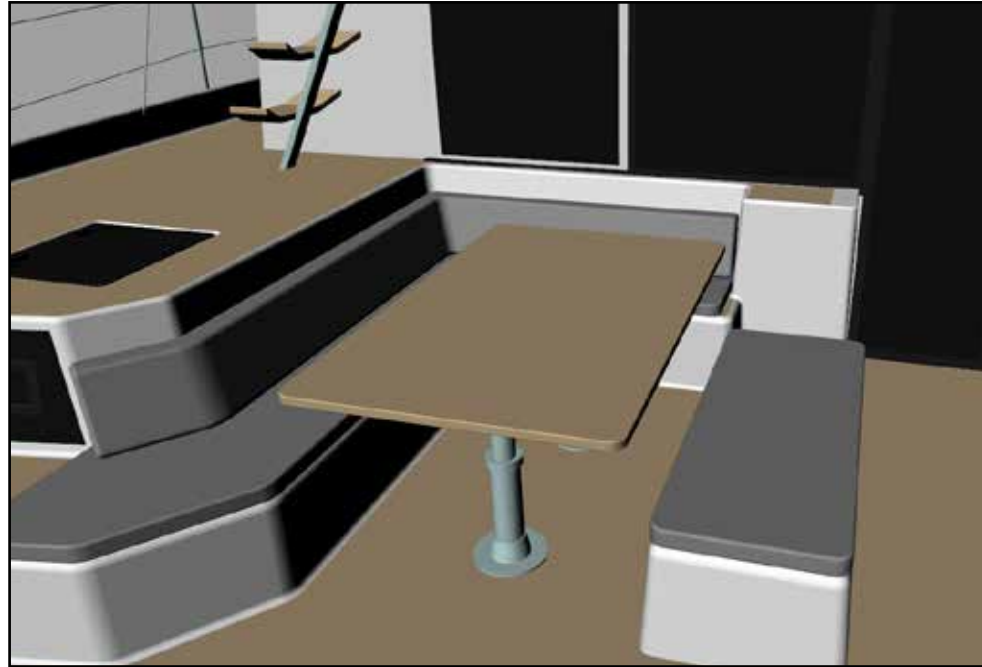


Perfect visibility around boat

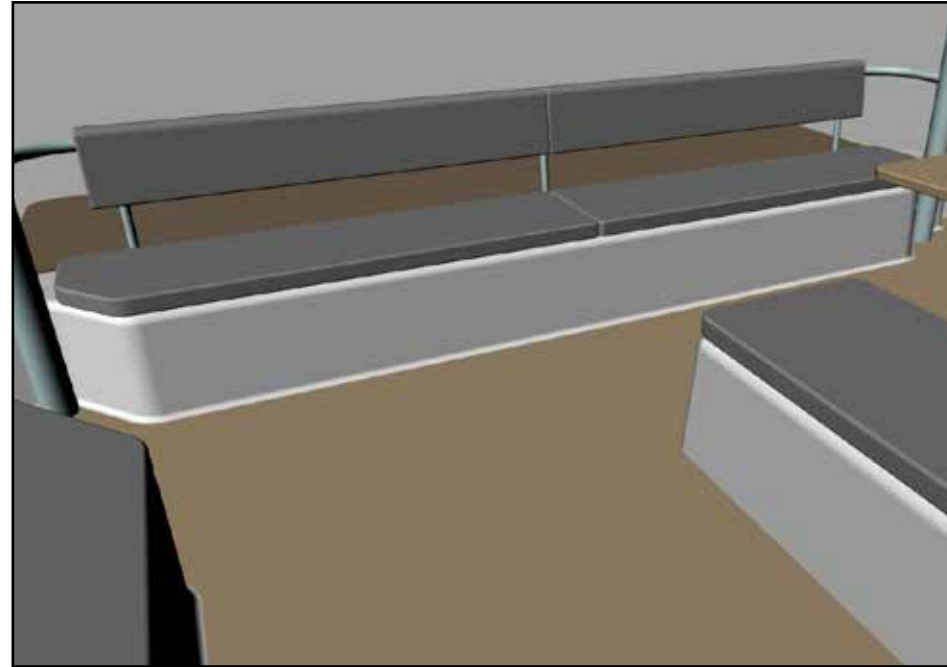


Huge and comfortable cockpit

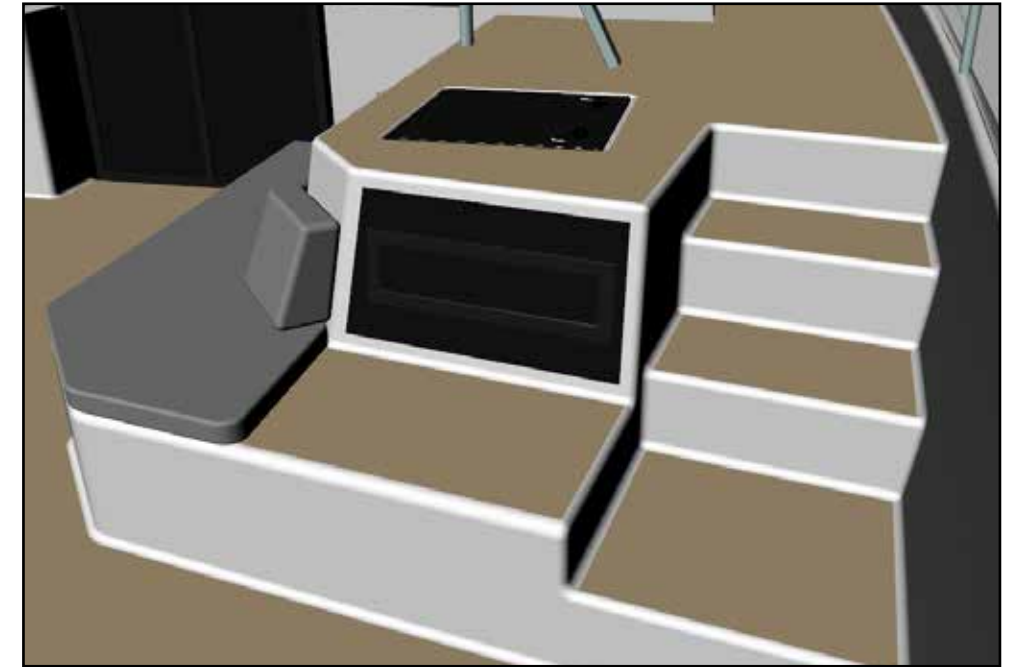




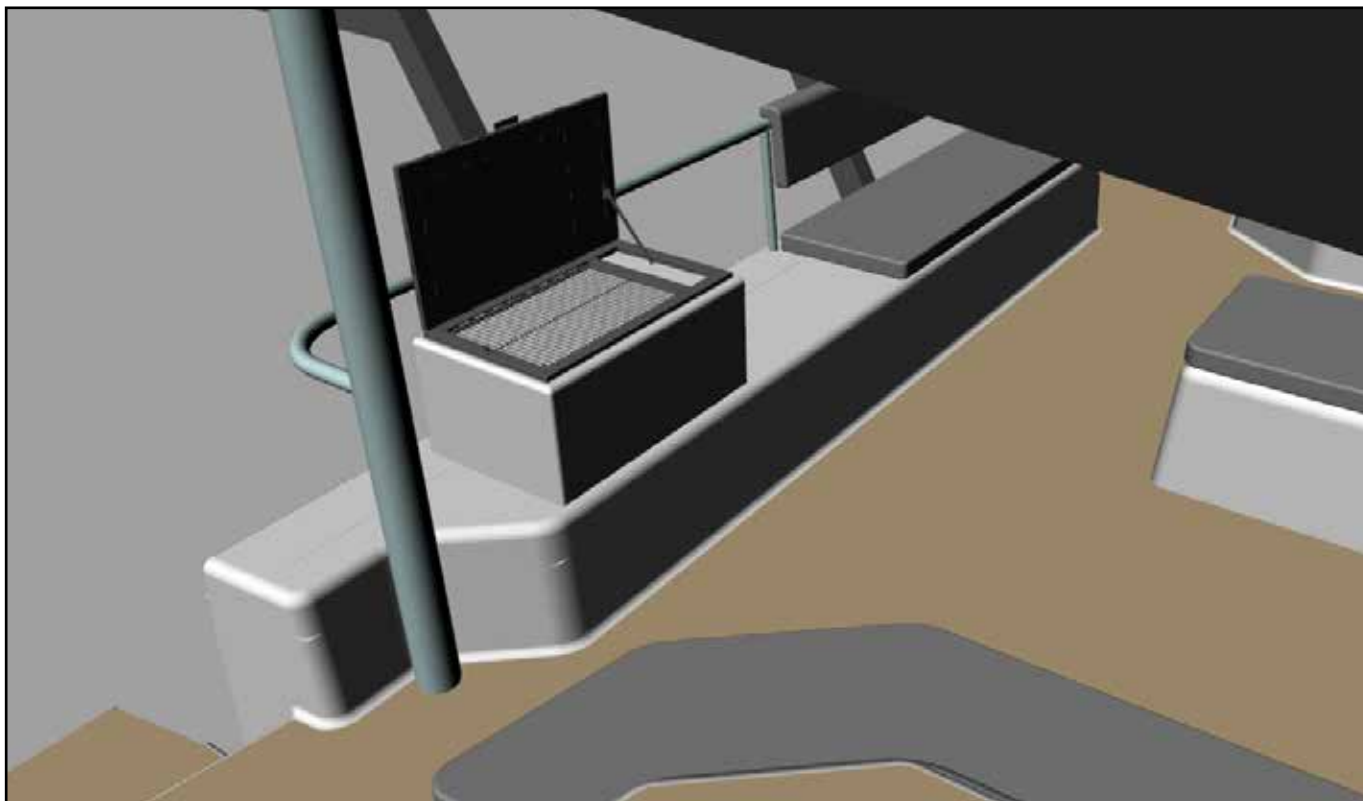
1 Wide and spacious cockpit table



2 Multiple sofas and sunbaths



3 Open deck aft cabins windows for best visibility on sea and natural light



4 Exterior galley with barbecue (opt.)

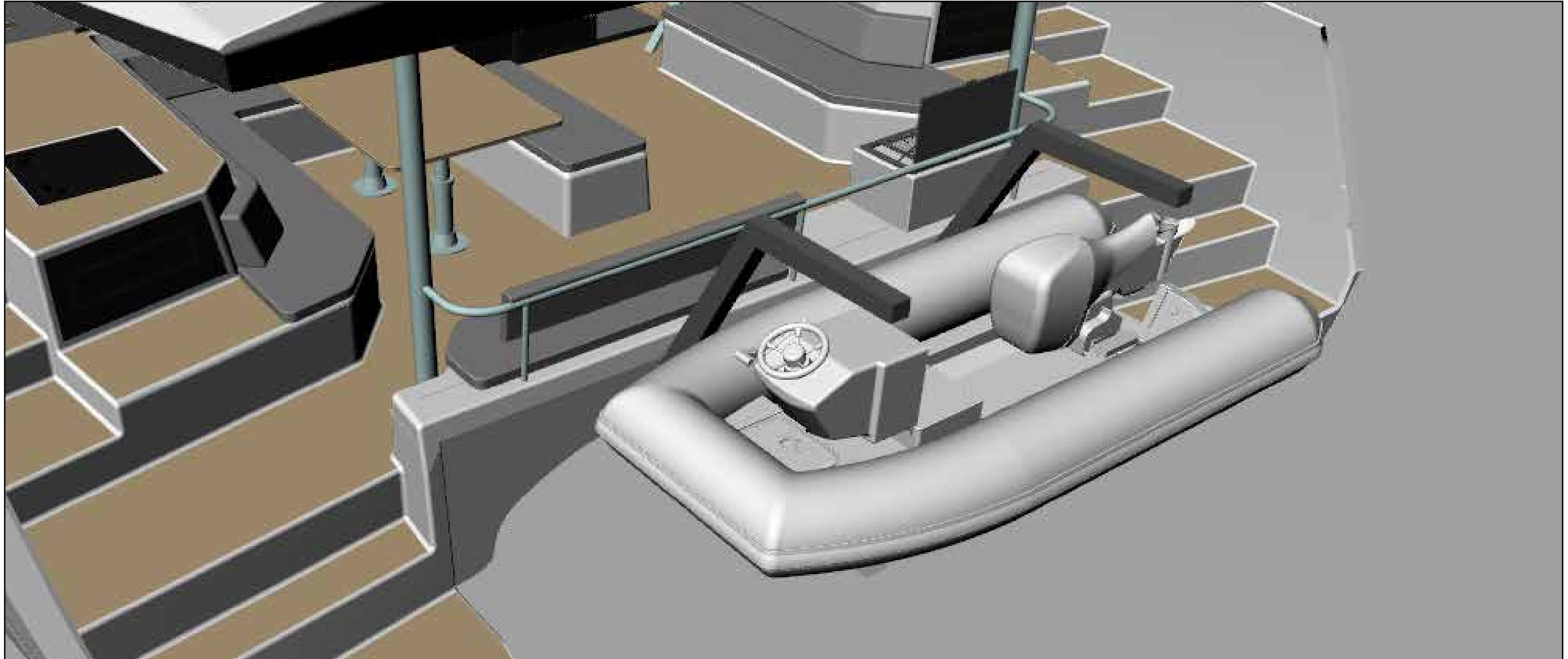


5 Full veranda opening in 3 slides



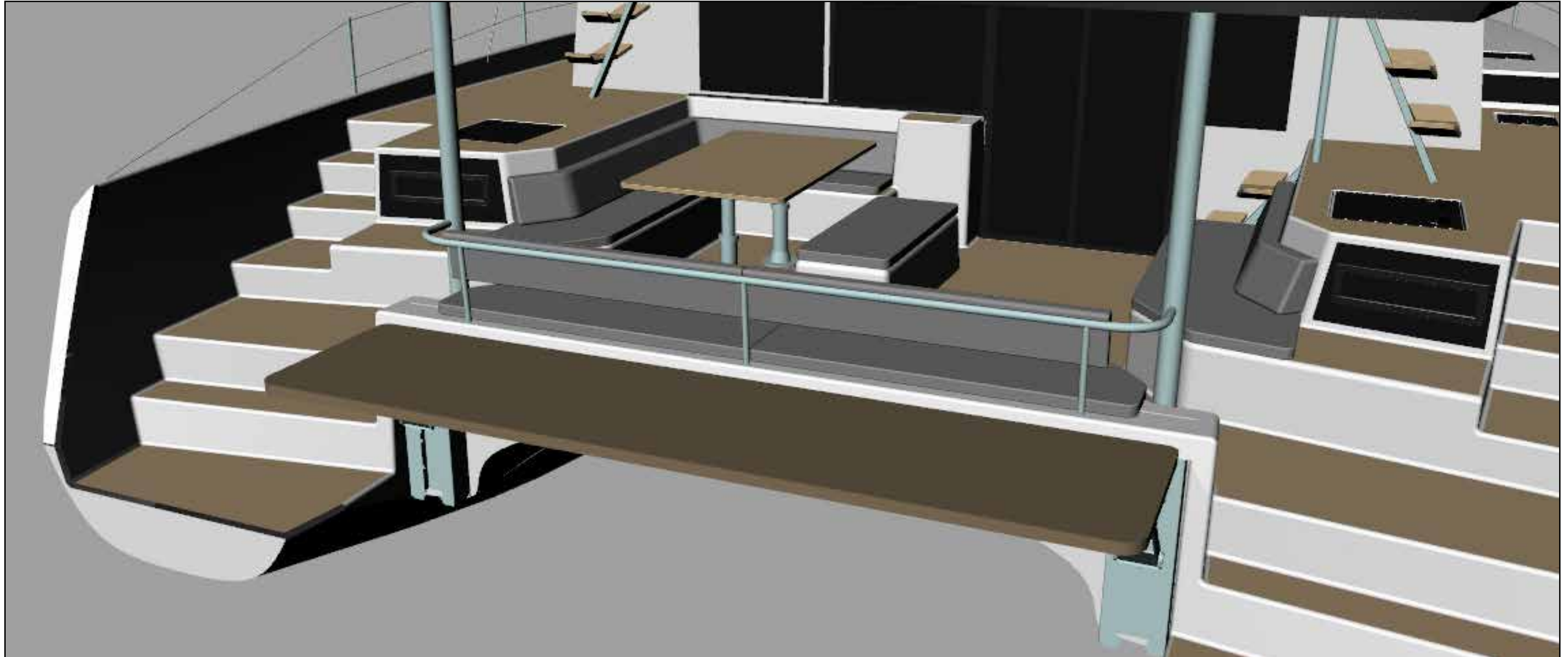
Perfect functionality for tender

Two available options for tenders systems



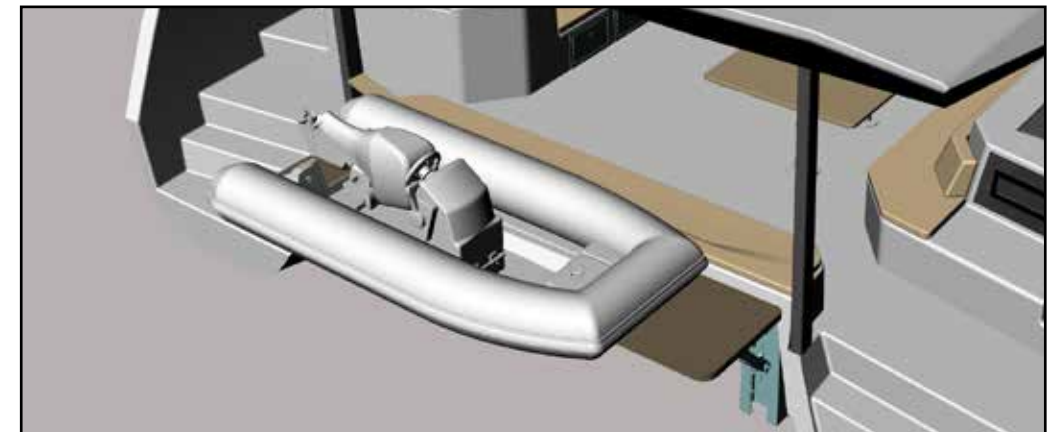
Tender davits

- Integrated in the whole structure
- Able to level a tender up to 650 kg.



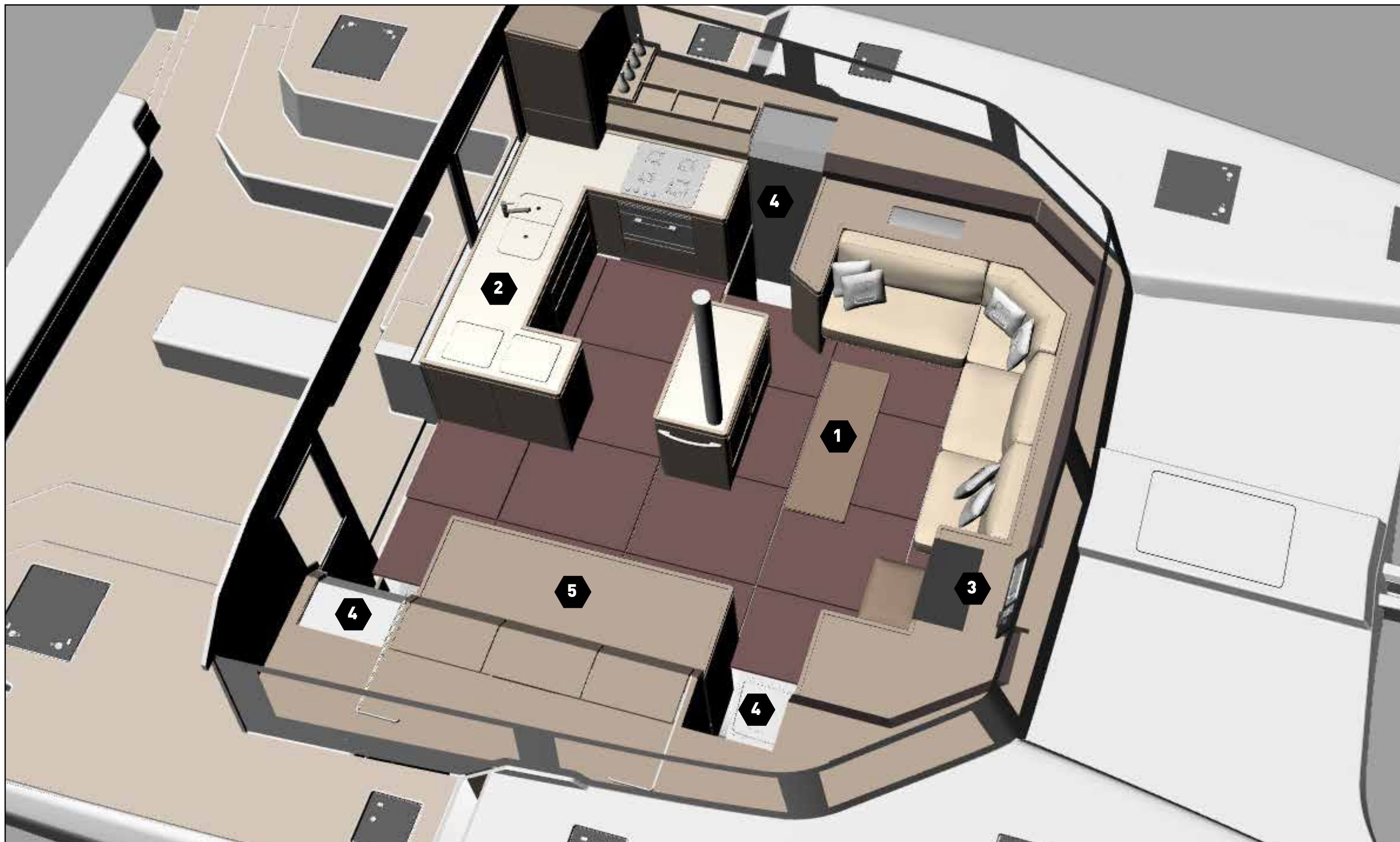
Electric platform - 3800mm x 900mm

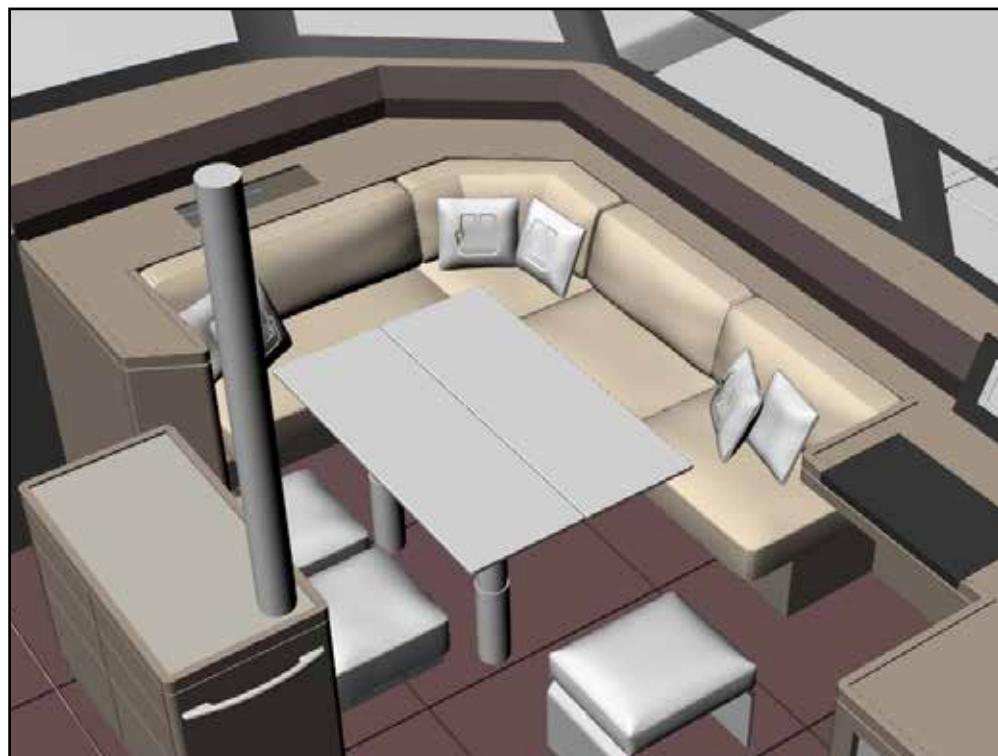
- Modern and elegant solution for most demanding clients.
- Easy to manipulate
- Can be used as bathing platform
- Able to level a tender up to 650 kg.





360° loft-style saloon

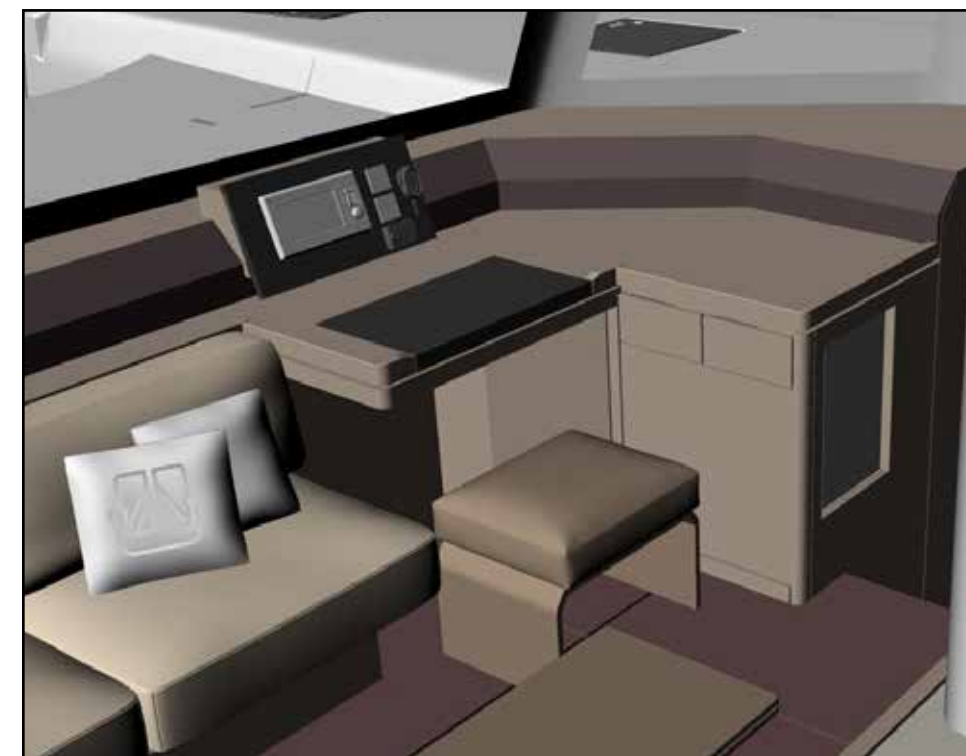




1 Modular dinette for day and dining configurations



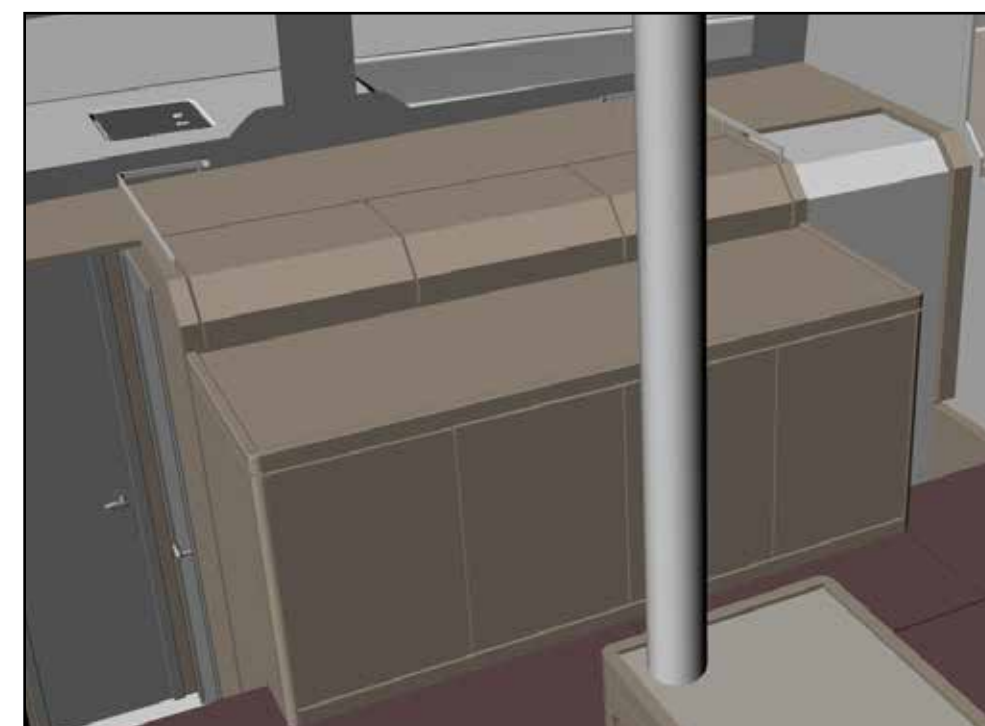
2 Functional, spacious and fully equipped galley



3 Chart table with autopilot control



4 Three stairs access to cabins and day head



5 High capacity storage furnitures



Layout A : 3 cabins / 4 heads + skipper

Configuration

3 Cabins / 4 Heads + Skipper

PORTSIDE HULL

- > 1 owner suite
- > Dressing area
- > Large sofa
- > Second storage wardrobe
- > Office area
- > Wide head with seperate shower

- > Crew cabin

STARBOARD HULL

- > 2 asymetrical guest cabins
- > Independent head with separate shower for each cabin
- > Independent head with separate shower / cabin

- > 1 day head with independent access from cabins

- > 1 service room

- > 1 sail locker

LOA = 14200

OWNER SUITE WITH OFFICE, SOFA
PRIVATE HEAD AND SEPARATE SHOWER

Owner Version

Crew Cabin

Sail Locker

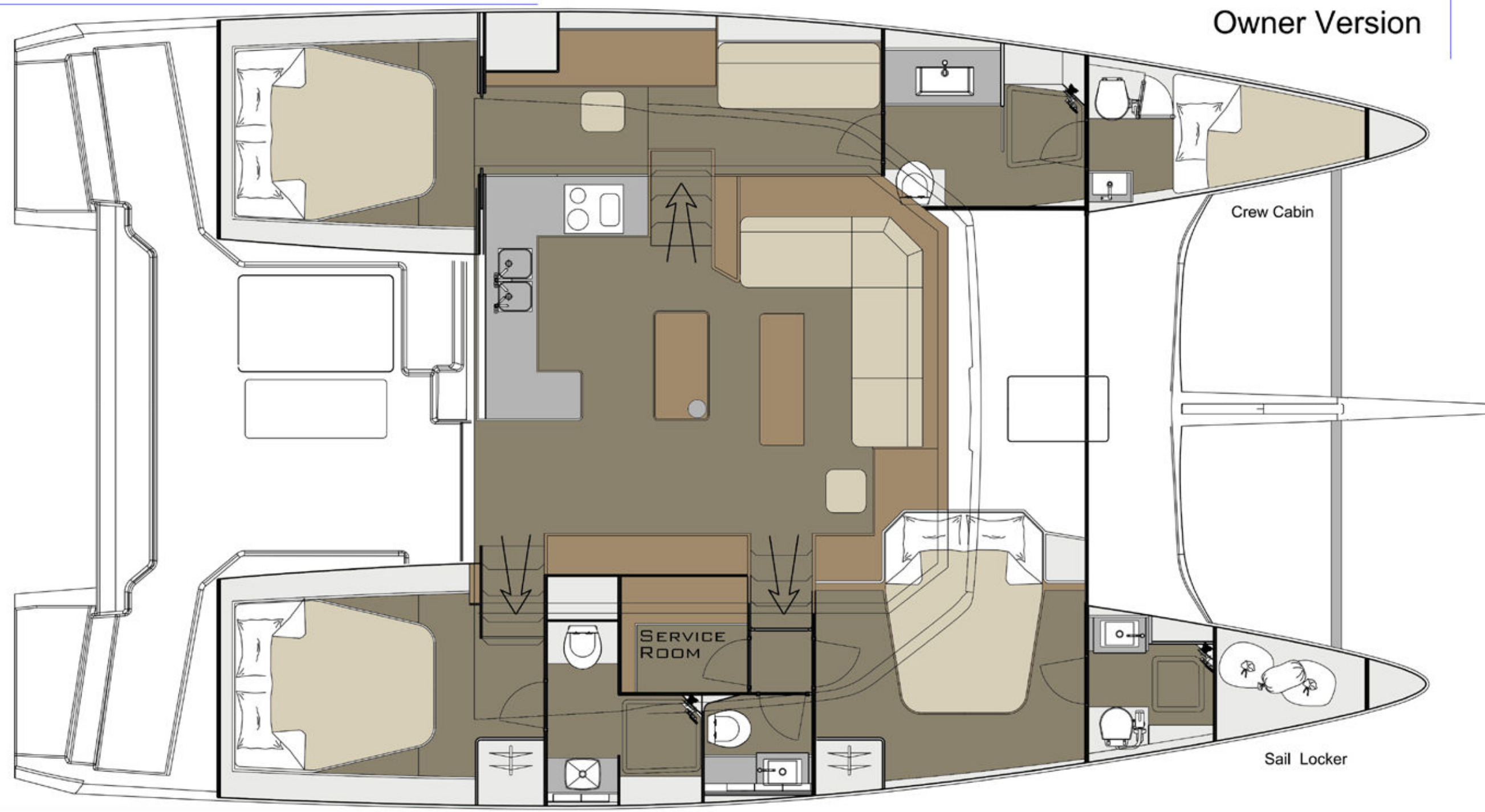
SERVICE
ROOM

DAY HEAD

VIP GUEST CABIN 1 WITH PRIVATE
HEAD AND SEPARATE SHOWER

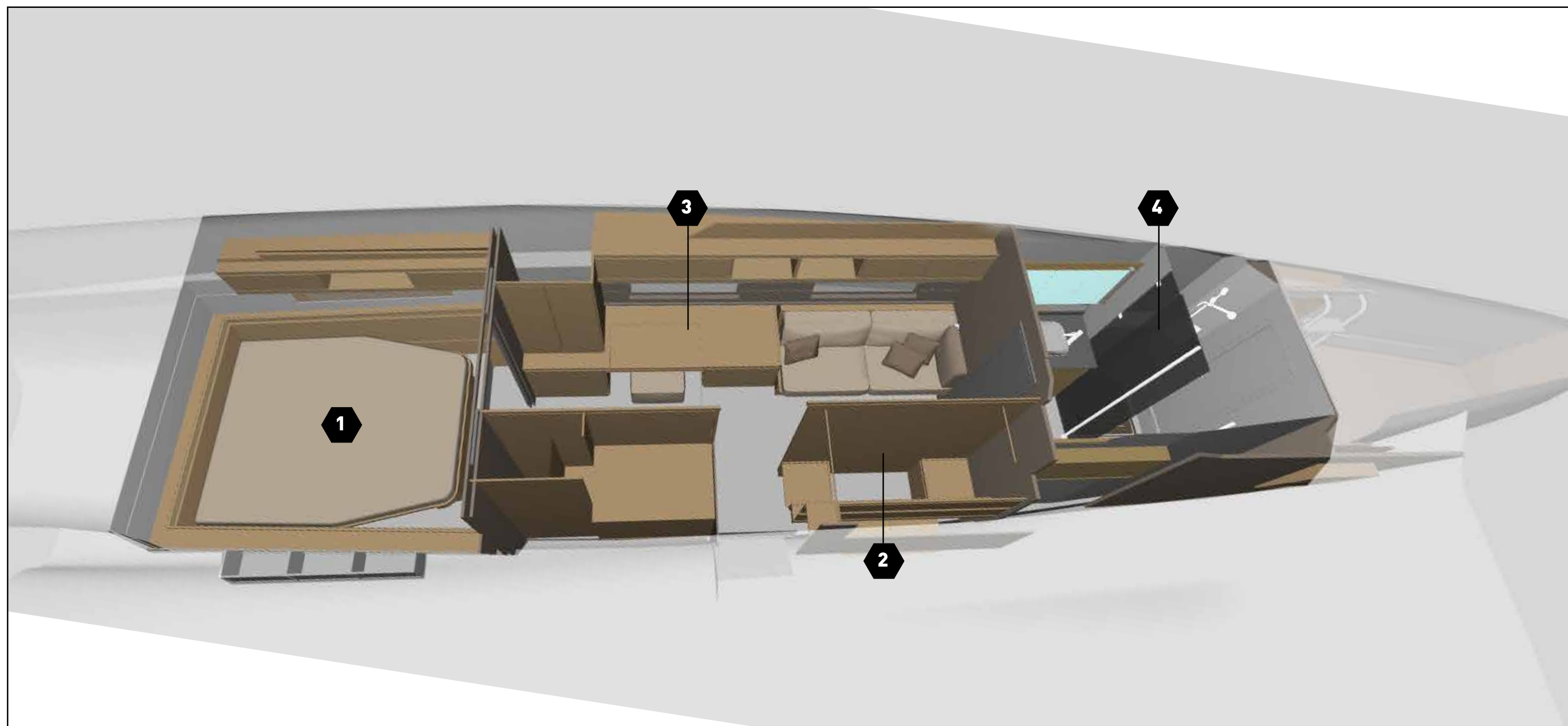
VIP GUEST CABIN 2 WITH PRIVATE
HEAD AND SEPARATE SHOWER

Bmax = 8000





Owner suite - portside hull





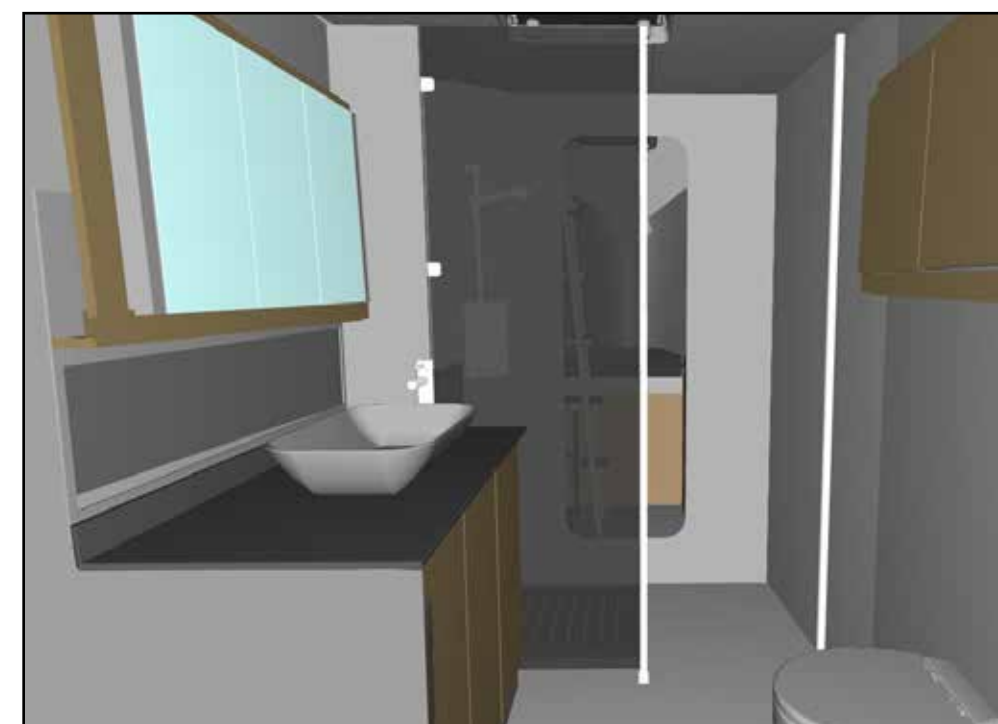
1 Homelike bed area 2.00 x 1.70



2 Large and organized dressing



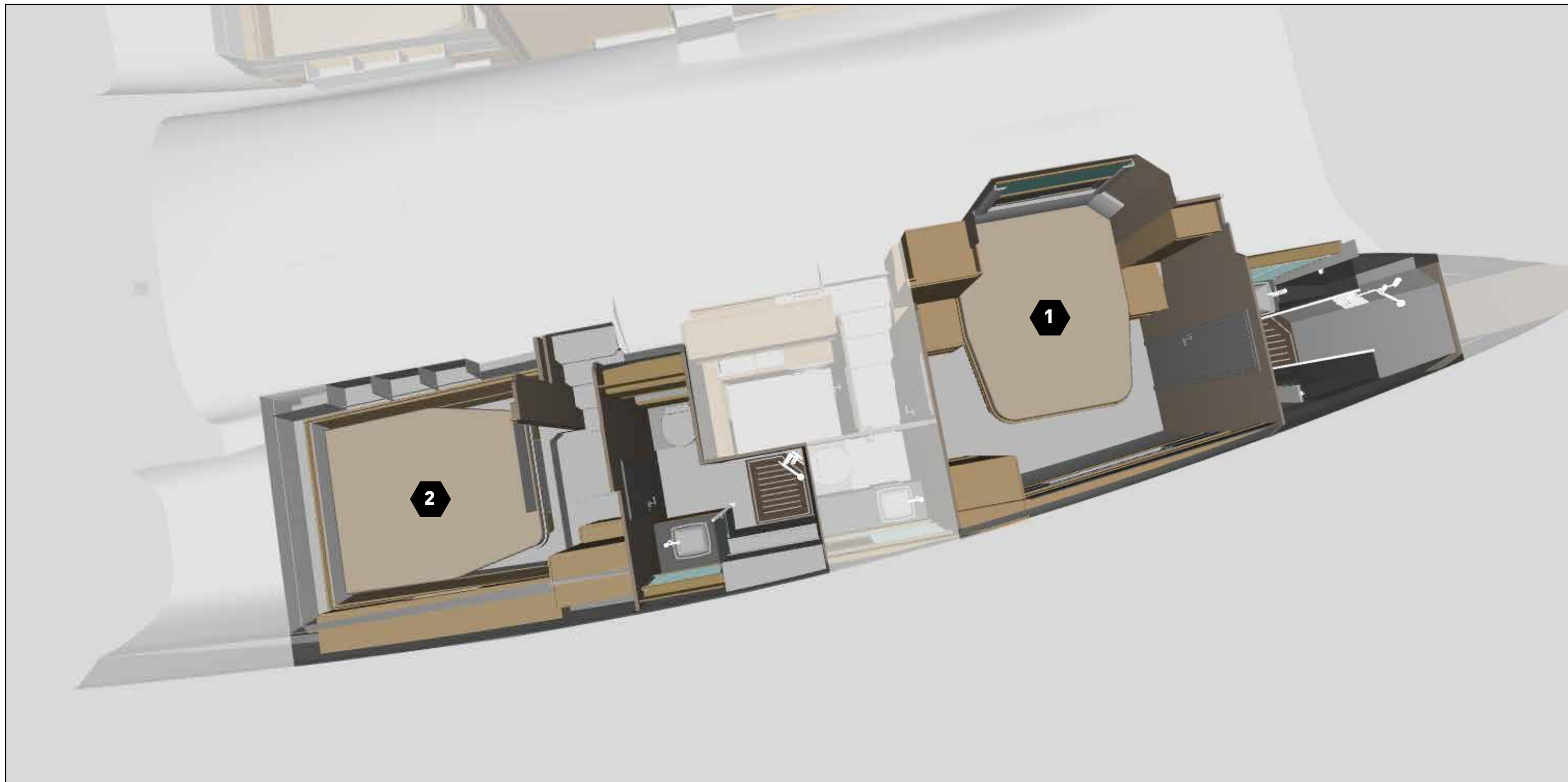
3 Owner office



4 Luxury head with wide bassin and separate shower

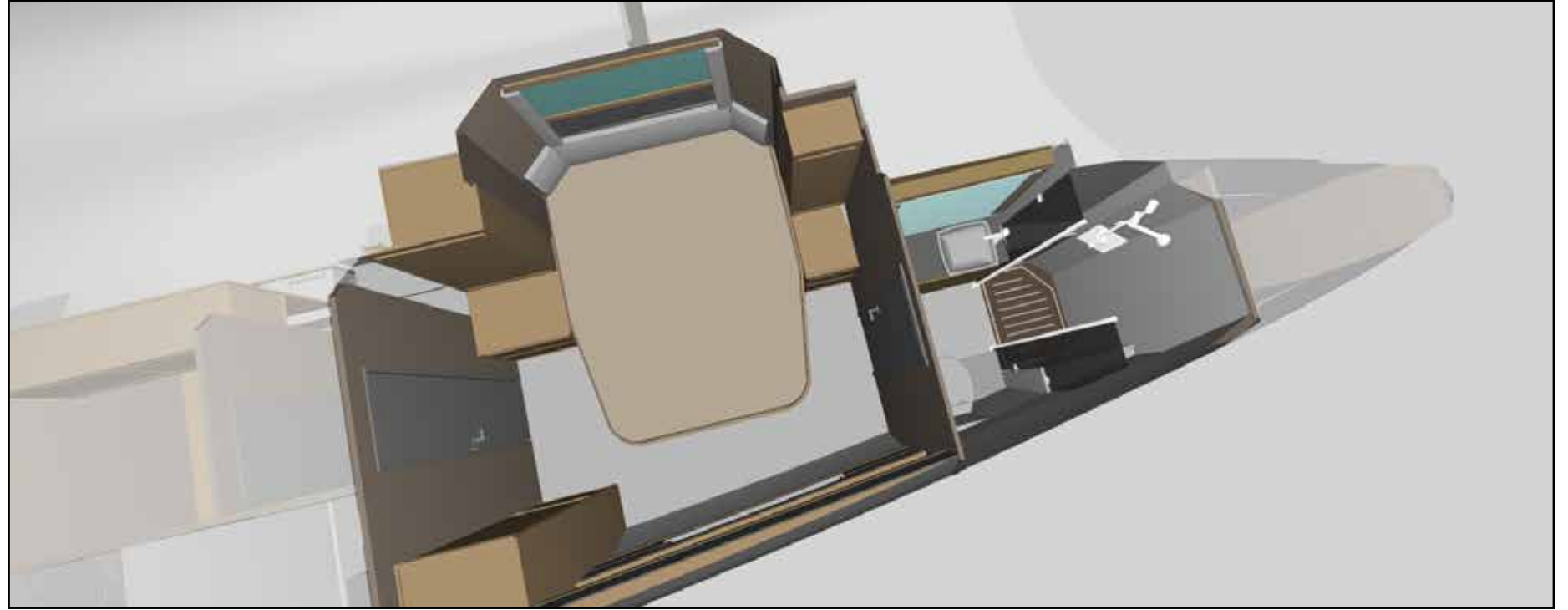


Guest cabins - Starbord hull





1 Front guest cabin



2 Aft guest cabin



Service room



Modular functionality

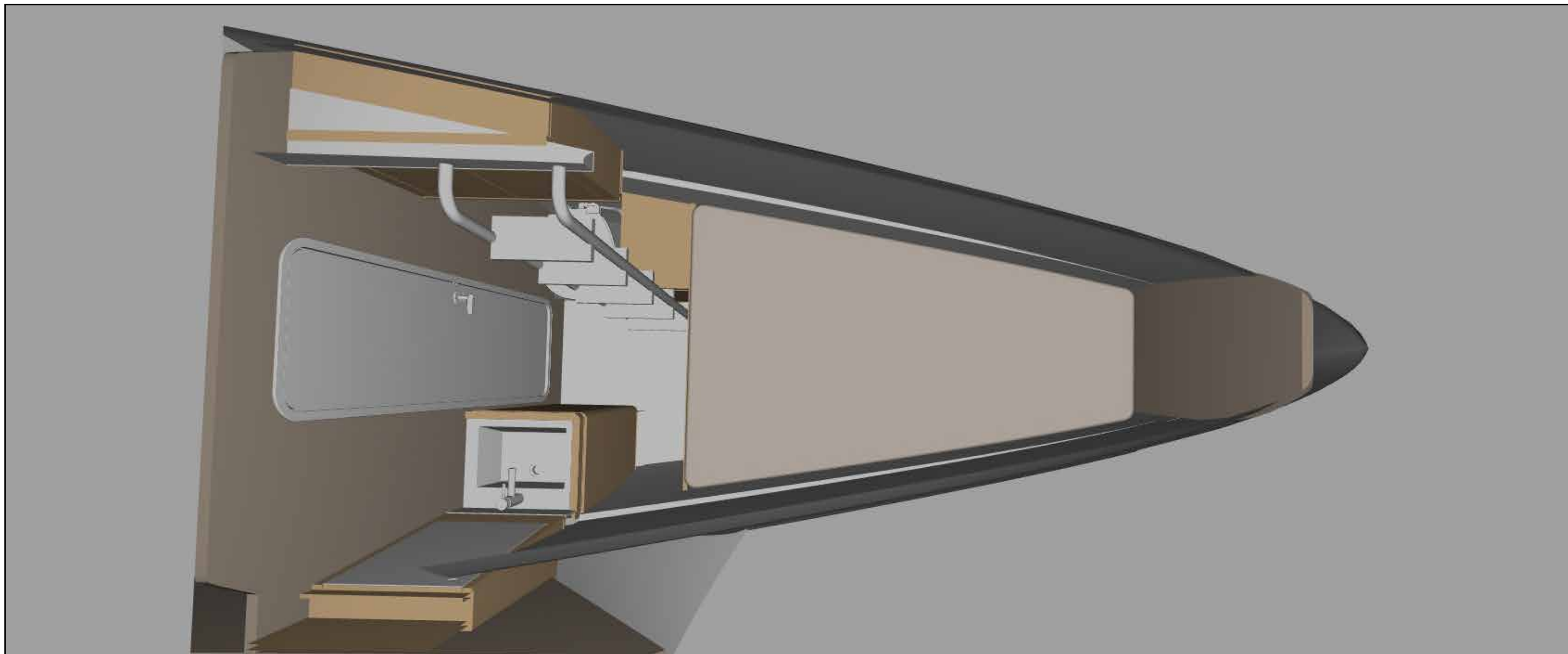
> 1100 mm x 950 mm

> Free management to setup : second galley, laundry or storage...





Skipper cabin



Functional and comfortable

- > Bed size : 1900 mm x 1150 mm
- > Basin, shower and wc.
- > Emergency exit



Layout B : 4 cabins / 5 heads + skipper

Configuration

4 Cabins / 5 Heads + Skipper

PORTSIDE HULL

- > 2 symmetrical guest cabins
- > Independent head with separate shower for each cabin
- > 1 crew cabin

STARBOARD HULL

- > 2 asymmetrical guest cabins
- > Independent head with separate shower for each cabin
- > Independent head with separate shower / cabin
- > 1 day head with independent access from cabins
- > 1 service room
- > 1 sail locker

LOA = 14200

VIP GUEST CABIN 4 WITH PRIVATE
HEAD AND SEPARATE SHOWER

VIP GUEST CABIN 5 WITH PRIVATE
HEAD AND SEPARATE SHOWER

Charter Version 2

Crew Cabin

Sail Locker

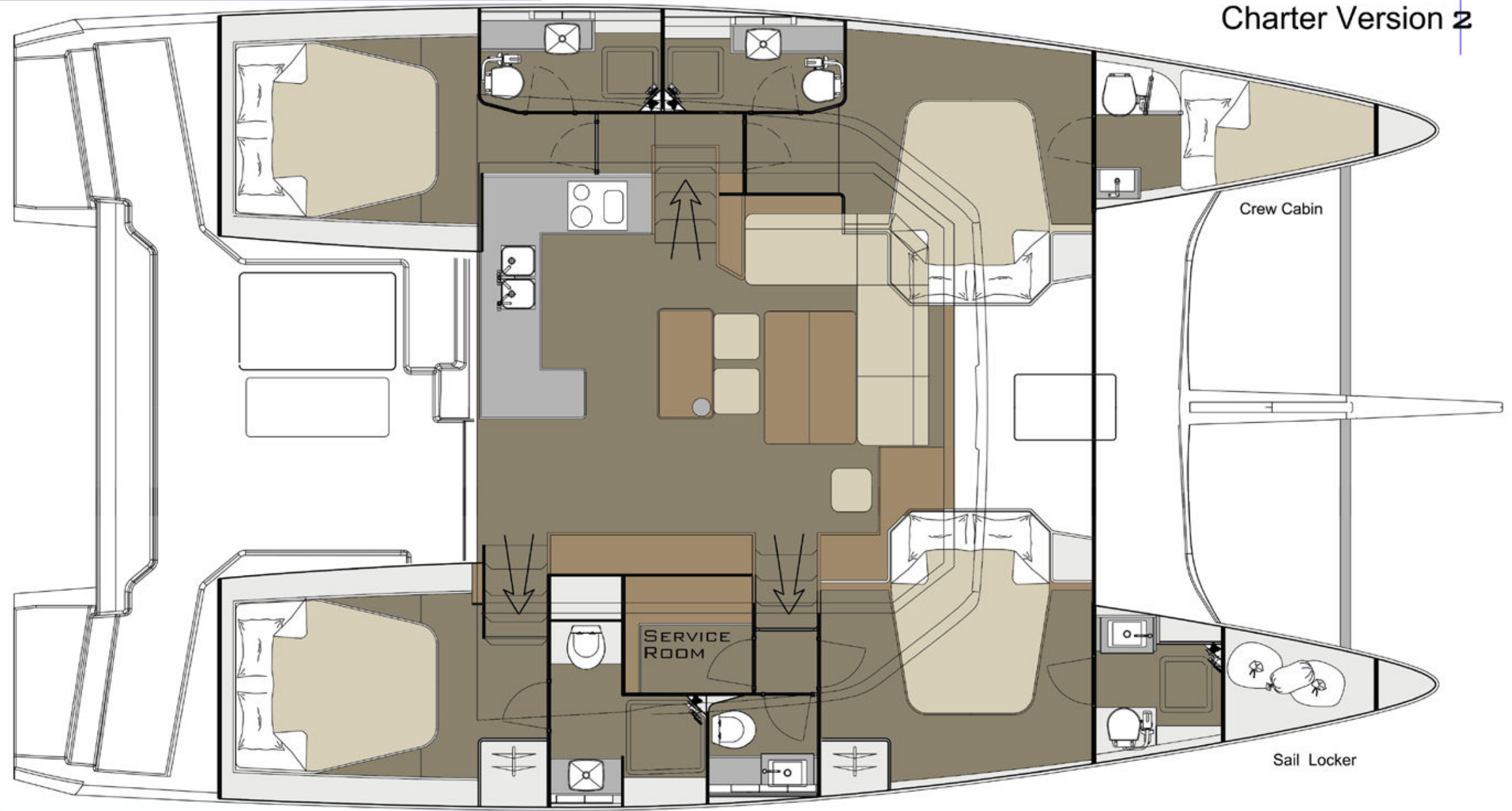
SERVICE
ROOM

DAY HEAD

VIP GUEST CABIN 1 WITH PRIVATE
HEAD AND SEPARATE SHOWER

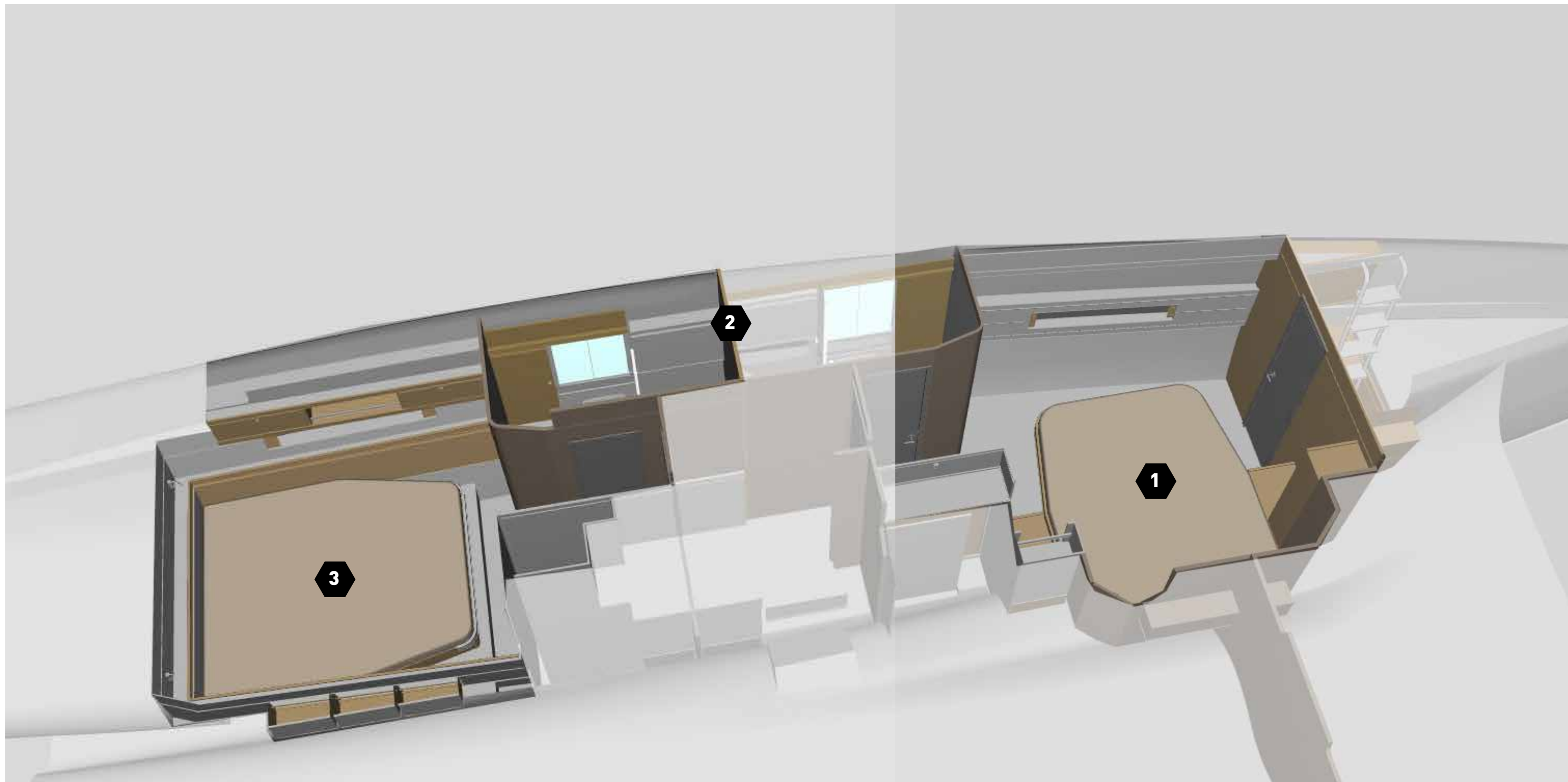
VIP GUEST CABIN 2 WITH PRIVATE
HEAD AND SEPARATE SHOWER

Bmax = 8000





Guest cabins - Portside hull





1 Front guest cabin



2 Double head with separate shower



3 Aft guest cabin



Layout C : 5 cabins / 5 heads + skipper

Configuration

5 Cabins / 5 Heads + Skipper

PORTSIDE HULL

- > 2 asymmetrical guest cabins
- > Independent head with separate shower for each cabin
- > 1 skipper cabin

STARBOARD HULL

- > 2 asymmetrical guest cabins
- > 1 additional pulman cabin with 2 beds
- > Independent head for each cabin
- > 1 day head with independent access from cabins
- > Family suite concept : parents cabin with head + children pulman with head

LOA = 14200

VIP GUEST CABIN 4 WITH PRIVATE
HEAD AND SEPARATE SHOWER

VIP GUEST CABIN 5 WITH PRIVATE
HEAD AND SEPARATE SHOWER

Charter Version

Crew Cabin

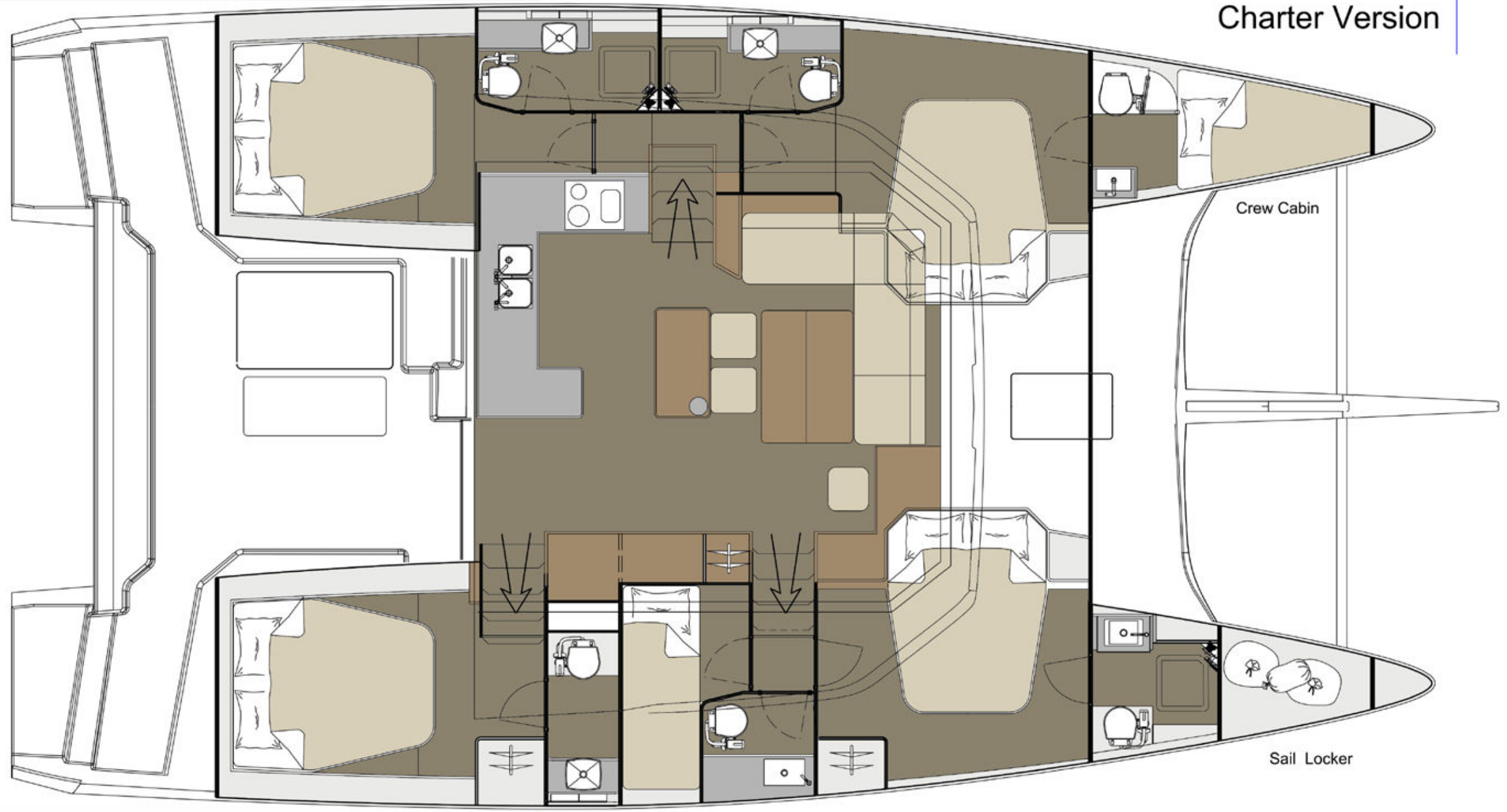
Sail Locker

PULLMAN CABIN 2
WITH HEAD

VIP GUEST CABIN 3 WITH PRIVATE
HEAD AND SEPARATE SHOWER

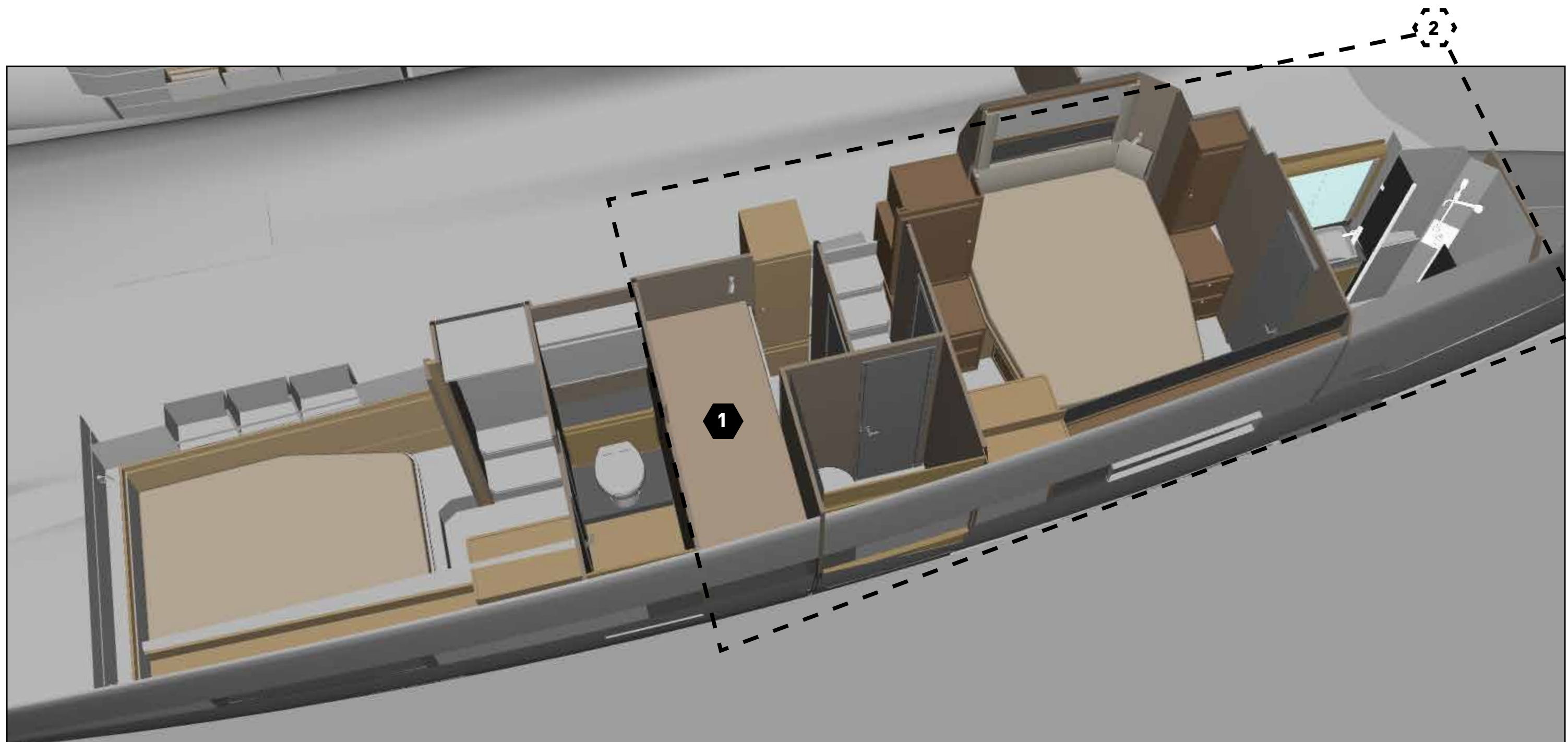
GUEST CABIN 1 WITH PRIVATE HEAD

Bmax = 8000



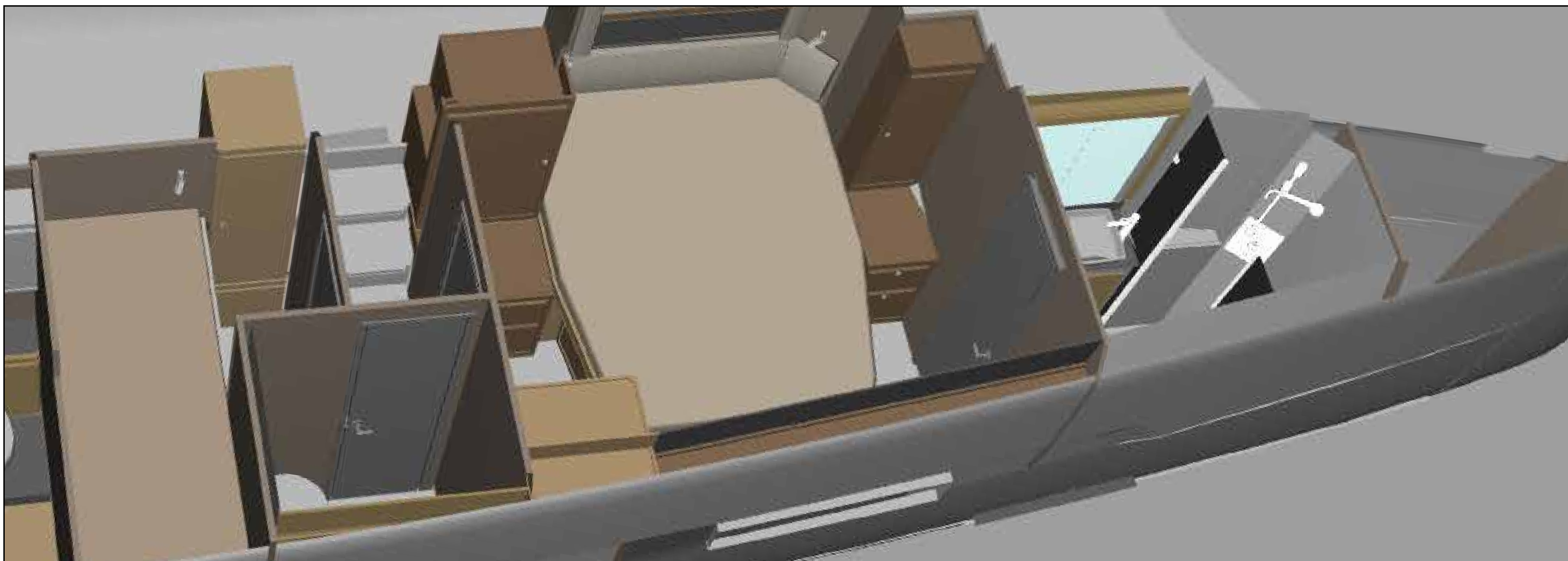


Family suite - Starboard hull





1 Pulman cabin - 2 beds



2 Family suite - Independent parents / kids cabins



Technical specifications

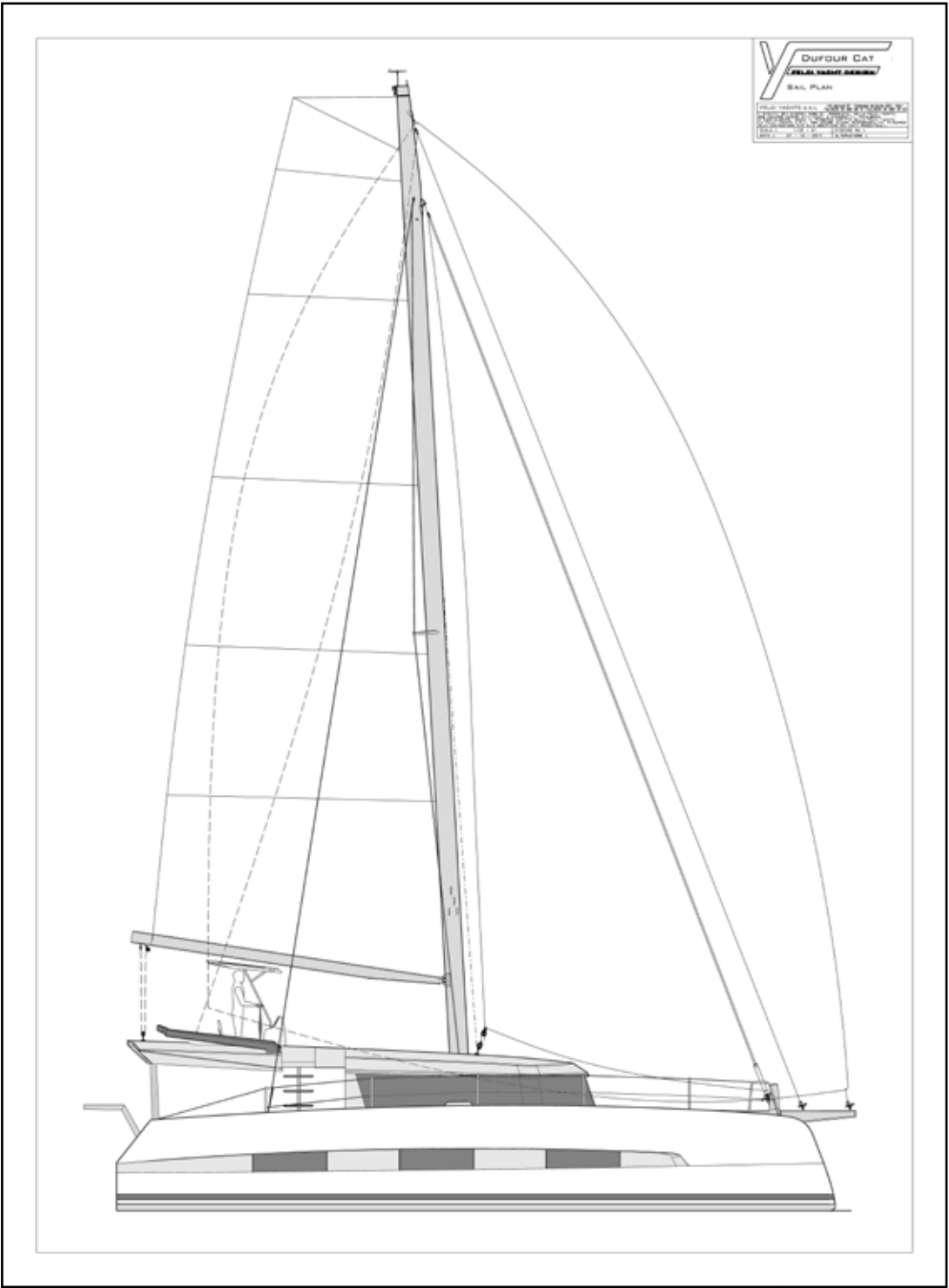
General

Architect	U. FELCI
LOA (with bowsprit)	14,70 m
Hull lenght	14,20 m
Feet (real)	46,58 ft
Beam max	8,00 m
Draft	1.30 m
Displacement	14 955 kg
Water capacity	700 l
Fuel capacity	900 l
Engine	2 x 50 cv
Engine (opt.)	2 x 60 cv



Sail area

Total sail area	124 m2
Main sail	76 m2
Jib	48 m2
Code 0	90 m2
Gennaker	110 m2





www.dufour-catamarans.com