

450 S

Technical specification

L A G O O N

**Contents**

---

TECHNICAL DATAS.....	3
CONSTRUCTION.....	4
SAILS AND RIGGINGS .....	4
HARDWARE.....	4
MOORING.....	4
VARIOUS EQUIPMENTS.....	5
MOTORISATION.....	5
PLUMBING.....	5
ELECTRICS .....	5
DECK LAYOUT.....	7
TRANSOM.....	7
AFT COCKPIT .....	7
HELM STATION .....	7
FORWARD COCKPIT.....	7
BOW LOCKERS .....	7
INTERIOR LAYOUTS.....	8
GENERALITIES .....	8
3 CABINS VERSION .....	9
4 CABINS VERSION .....	12

## TECHNICAL DATAS

---

Length over all LOA	13,96 m / 45'10"
Length	13,38 m / 43'11"
Beam over all	7,87 m / 25'1"
Mast clearence	23,05 m / 73'3"
Draft	1,30 m / 4'3"
Displacement (ECC)	15,00 t / 33075 Lbs
Upwind sail area	130 m <sup>2</sup> / 1399 sq.ft.
Full batten mainsail	79 m <sup>2</sup> / 850 sq.ft.
Square top mainsail (option)	81 m <sup>2</sup> / 872 sq.ft.
Furling genoa	51 m <sup>2</sup> / 549 sq.ft.
Code 0 (option)	93 m <sup>2</sup> / 1001 sq.ft.
Fresh water capacity	2 x 175 l / 2 x 46 US gal
Fuel capacity	2 x 520 l / 2 x 137 US gal
Standard motorisation	2 x 45 hp CR à 2 x 57 hp CR
Architects	Van Peteghem-Lauriot Prévost
Interior Design	Nauta Design
Nb of berth	6 to 12
EC Certification	A : 12 - B : 14 - C : 20 - D : 30

## US SPECIFICATIONS

*Only for boats sold in USA*

- 110V heating element in water heater
- 1 holding tank with gravity drain/deck pump out in each head
- 1/2" windlass gypsy for non metric chain
- Gas propane circuit with solenoid valve

## CONSTRUCTION

---

- Polyester and high quality anti-osmotic resin
- Hull and deck laminated by infusion
- Balsa core hull, solid laminate under water line, white gel coat
- Balsa core bridge deck and deck
- Laminated marine plywood bulkheads

## SAILS AND RIGGINGS

---

### SAILS

- 1 high roach mainsail in Dacron with battens and LAGOON logo
- 1 genoa in Dacron with UV protective band

### RIGGING

- Tripod aluminum mast with mainsail track and ball-bearing
- Aluminum boom
- 2 encased shrouds
- 1 genoa forestay with manual furler
- 2 lazy-jacks for the mainsail
- Deck light on the mast

### RUNNING RIGGING

- 1 double purchase spectra mainsail halyard
- 1 spectra Genoa halyard
- 1 mainsail sheet pre-stretched
- 2 genoa sheets pre-stretched
- 1 boom topping lift
- 3 reefing lines (1<sup>st</sup> dynema)
- 1 genoa furling line pre-stretched
- 2 mainsail traveller car control lines pre-stretched

## HARDWARE

---

- 3 manual winches 60.2 STA (mainsail)
- Genoa tracks with genoa car and stopper
- Anodized aluminum crossbeam with mooring point for the genoa furler, anchor roller and navigation lights

## MOORING

---

- Composite longitudinal crossbeam with avec integrated chain run and forestay chain plate
- 8 mooring cleats
- 1700W 12V electrical windlass with vertical axe, gypsy (chain 12mm) and wireless remote in the anchor locker
- Access to the windlass and to the anchor locker through a vertical hatch

## VARIOUS EQUIPMENTS

---

- Pushpits with on port with flag pole and buoy bracket
- Height of the stanchions : 610 mm
- 2 ranges of life line

## MOTORISATION

---

- 2 diesel engines YANMAR 4JH45 45cv common rail sail drive
- 2 blades fixe propeller
- Sea water filter
- Mechanical engine throttles at the helm station
- Ventilation of the engine compartment : electrical extraction in the aft transom
- Sound-proofing of the engine compartment
- Fuel circuit :
  - 2 aluminum tanks of 2 x 520 liters
  - Fuel filter systems
  - Fuel shut off valve
  - Gauge at the general control panel

## PLUMBING

---

Fresh water circuit:

- Fresh water tank : 2 x 175L with gauge at the chart table
- Fresh water circuit with 1 main water group in the port companionway
- 60L electric water heater, 220V/engine exchanger

Grey water:

- Shower and washbasin drain to grey water tank and automatic pump
- Galley sinks drain directly overboard

Black water:

- 1 holding tank aft portside (80L)

Bilge pump circuit:

- 1 manual bilge pump with cockpit pump by hull
- 1 automatic immersed bilge pump by hull
- 1 manual release non-immersed bilge pump by hull

## ELECTRICS

---

Power circuit:

- 2 alternators 12V 80A
- 2 start batteries 12V 110A
- 3 service batteries 12V 140Ah

Batteries breaker under the bed of the aft starboard cabin

Distribution Electric panel:

- 12V General distribution panel at the chart table with protection by circuit breaker

- Ammeter, voltmeter, circuit breaker, panel lighting, cigarette lighter

Lighting:

- 12V LED outside lighting
- 12V LED inside lighting
- Navigation lights LED
- 12V lighting in the engine compartment

## DECK LAYOUT

---

### TRANSOM

---

- Hot/cold deck shower on starboard
- S/s swim ladder on starboard with handrail
- Storage on the side of the transom (port and starboard)

### AFT COCKPIT

---

- Large cockpit usable as a deck salon, protected by a hard top bimini
- "U" bench on portside with storage locker
- Gas locker (2 bottles of 10 kg)
- Removable polyester cockpit table 8/10 people
- Large storage locker with possibility to install option like icemaker and synthetic resin countertop
- 1 "Lazy boy" area with locker in the seat on starboard
- Waste bin with upper access and lateral door on portside
- Storage locker with top access (70 L) and evacuation on portside
- Polyester fiddle anti-runoff on the sides of the cockpit

### HELM STATION

---

- Composite staircases to access from the cockpit
- Helmsman bench with 2 seats
- Leather covered s/s steering wheel
- Instrumentation console
- Cup holder with s/s lining
- Storage on the side of the helm station
- Access to roof via a staircase with teak steps and s/s structure + handrail
- Storage bag for the halyards on the portside of the helm station
- Composite locker with flap for the storage of the halyards (under the staircase to access to the roof, along the salon/cockpit bulkhead)

### FORWARD COCKPIT

---

- « U » seating area
- Storage locker under the portside seat - generator
- Storage locker under the portside seat
- Storage locker under the central seat
- Trampoline with nylon thread

### BOW LOCKERS

---

- Access through opening deck hatches with locker
- Wooden floor
- White painting
- Lighting

## INTERIOR LAYOUTS

---

### GENERALITIES

---

- Interior woodwork in Alpi blond oak plywood
- Dark brown laminated floor (Milano)
- S/s handrail leather covered
- Fabric-covered plywood ceiling panels or fiberglass liners in cabins and wash rooms
- Fabric-covered plywood on hull liner in cabins
- Polyester ceiling and fabric-covered plywood in the salon
- Access to the cabins and bathrooms without doorstep

### Standing headroom

---

Salon :	2.06m
Cabin :	2.04 m
Bathroom :	2.04 m

### Mattress and upholstery

---

- Marine mattresses made of multi-layer alveolar foam with several densities (tick. 130mm)
- Mattresses treatment: anti-microbial, anti-bacterial, non-allergenic, anti-dust mite
- Standard upholstery as indicated on Lagoon sample book
- Synthetic fabrics adapted to marine environment:
  - washable (40°C)
  - U.V. resistant
  - water repellent, with anti-stain treatment
- Blackout curtains in the cabins and salon

### Lighting

---

- 12V LED ceiling spotlights
- 12V LED reading lights headboard
- 12V LED reading lights at the chart table

### Available version

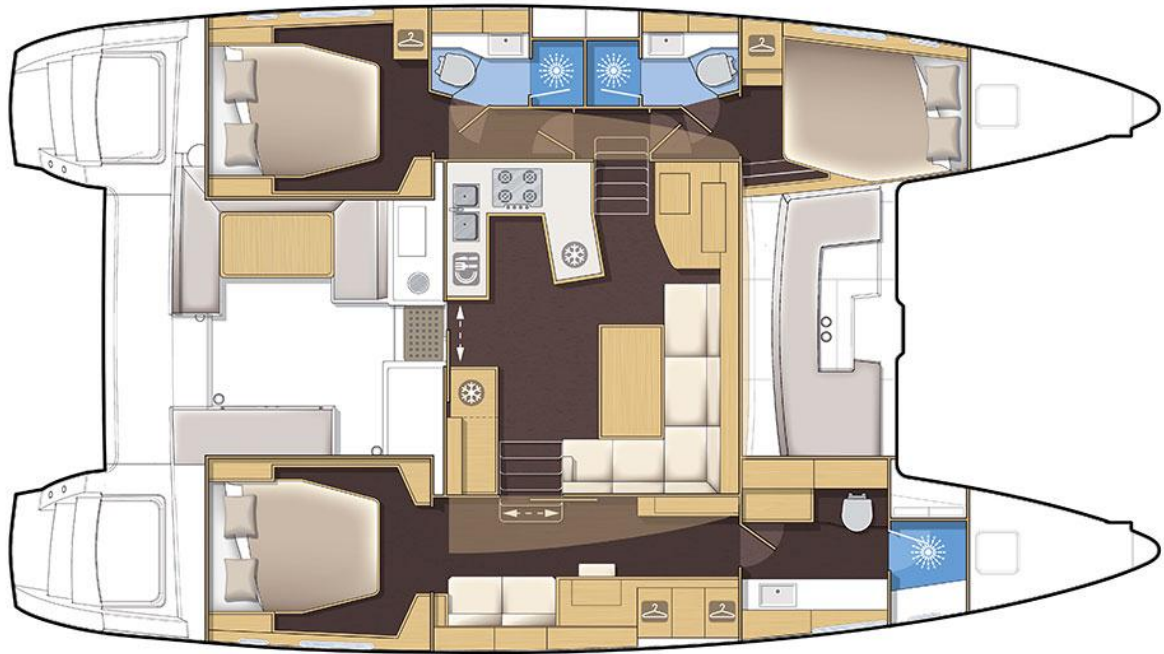
---

- 3 cabins
- 4 cabins



### 3 CABINS VERSION

---



Version 3 cabines / 3 cabin version

### SALON

---

- Sliding door and window with aluminum locker for the access to the cockpit, can be locked open or closed
- Large varnished salon table exchangeable with the polyester table from the cockpit (and the low table in option) and convertible in berth
- 6 seats « L » bench on starboard
- Lockers under the bench
- Various high and low storage on the starboard cupboard in front of the table (option TV/ option second fridge or freezer)
- Fabric covered steel pillar
- Wooden gunwale
- 2 opening portholes in the front window
- 1 opening porthole in the port side window

### CHART TABLE

---

- Large instrument console with panel to install the electronics
- Seat (*Essential equipment*)
- Desk with flaps
- 2 storage niches

### GALLEY

---

- « U » shape galley on portside
- Synthetic resin countertop

- Double s/s sink with hot/cold mixer tap
- Storage under the sink
- 3 burners gas stove
- Grill oven with s/s inside
- Flap under the oven
- Bottle storage
- 12V 130L fridge with wooden front door
- Storage unit with drawers (dishwasher option)
- High cupboards on portside (microwave option)

## PORTSIDE HULL

---

### **AFT CABIN**

- 1 double bed with lateral access (2.05 x 1.60 m)
- 2 bed nightstands, one with storage
- 2 under bed drawers
- 1 full high wardrobe – outboard side
- 1 long shelf
- 1 low cupboard with shelves – inboard side
- 1 opening deck hatch
- 1 opening porthole
- 1 hull fixe window in Plexiglas white silkscreen printing

### **AFT AND FORWARD BATHROOM**

- Synthetic resin countertop and washbasin
- Hot/cold mixer tap
- High cupboards 2 doors with mirror
- Separate shower with Plexiglas door
- Composite shower grating
- Big size manual toilet
- 1 opening deck hatch

### **FORWARD CABIN**

- 1 double bed with lateral access (2.05 x 1.42 m)
- 1 under bed drawer
- 1 large headboard mirror
- 1 cupboard with wardrobe (upper part) and shelves (lower part) – inboard side
- 1 storage niche with on central shelf – outboard side
- Bookshelves on 2 levels
- 1 opening deck hatch
- 1 opening porthole
- 1 hull fixe window in Plexiglas white silkscreen printing

## STARBOARD HULL

---

### **AFT CABIN**

- Sliding door with locker
- 1 double bed with lateral access (2.05 x 1.60 m)
- 2 bed nightstands with storage
- 1 under bed drawer
- 2 low cupboard at the foot of the bed

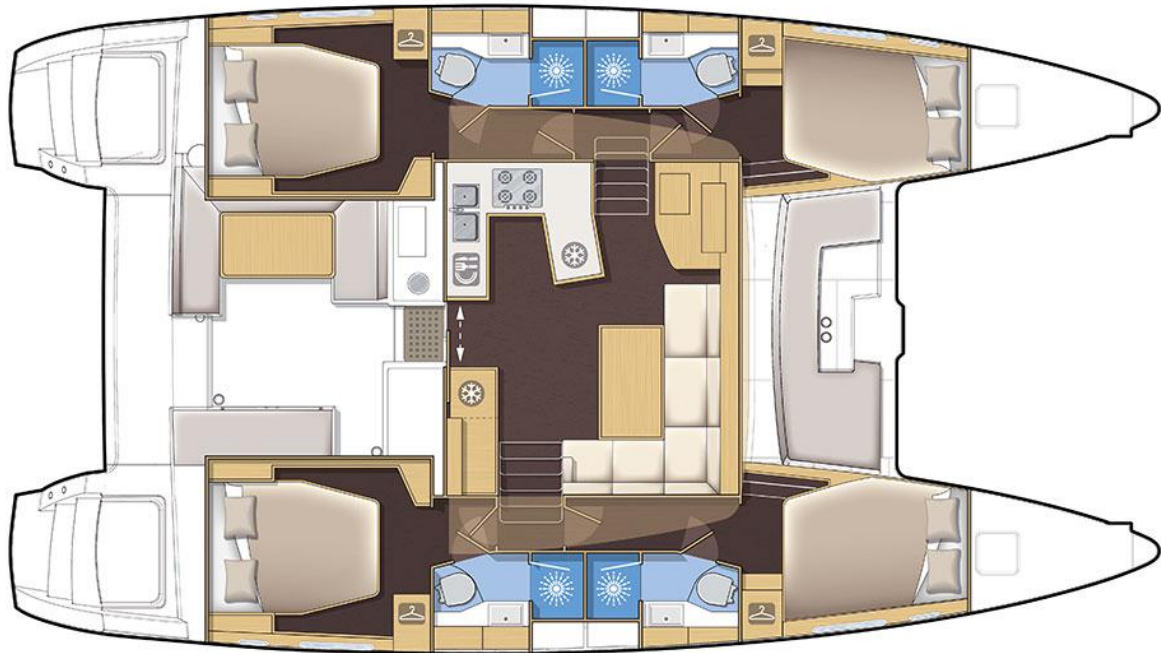
- 2 seats sofa with storage
- Dessert trolley on the side of the sofa
- Desk with flap
- Large storage cupboard with 4 doors and 1 bookshelve – outboard side
- Cupboard unit with :
  - 2 doors wardrobe + 1 door with shelves – upper part
  - 3 drawers and shelves – lower part
- 3 opening deck hatches
- 1 opening portholes
- 1 hull fixe window in Plexiglas white silkscreen printing 910x423 mm

#### **FORWARD BATHROOM**

- Synthetic resin countertop and washbasin
- Hot/cold mixer tap
- High cupboards 3 doors with mirror
- Low cupboards 4 doors under the washbasin
- Teak floor
  
- Separate shower with Plexiglas glass door
- Composite shower grating
  
- Big size manual toilet
- High cupboards 2 doors
  
- 1 hull fixe window in Plexiglas black silkscreen printing 910x423 mm with 1 integrated 1 opening deck hatch
- 1 opening porthole
- 1 hull fixe window in Plexiglas white silkscreen printing

## 4 CABINS VERSION

---



Version 4 cabines / 4 cabin version

## SALON

---

- Sliding door and window with aluminum locker for the access to the cockpit, can be locked open or closed
- Large varnished salon table exchangeable with the polyester table from the cockpit (and the low table in option) and convertible in berth
- 6 seats « L » bench on starboard
- Lockers under the bench
- Various high and low storage on the starboard cupboard in front of the table (option TV/ option second fridge or freezer)
- Fabric covered steel pillar
- Wooden gunwale
- 2 opening portholes in the front window
- 1 opening porthole in the port side window

## CHART TABLE

---

- Large instrument console with panel to install the electronics
- Seat (*Essential equipment*)
- Desk with flaps
- 2 storage niches

## GALLEY

---

- « U » shape galley on portside
- Synthetic resin countertop

- Double s/s sink with hot/cold mixer tap
- Storage under the sink
- 3 burners gas stove
- Grill oven with s/s inside
- Flap under the oven
- Bottle storage
- 12V 130L fridge with wooden front door
- Storage unit with drawers (dishwasher option)
- High cupboards on portside (microwave option)

## PORTSIDE HULL

---

### **AFT CABIN**

- 1 double bed with lateral access (2.05 x 1.60 m)
- 2 bed nightstands, one with storage
- 2 under bed drawers
- 1 full high wardrobe – outboard side
- 1 long shelf
- 1 low cupboard with shelves – inboard side
- 1 opening deck hatch
- 1 opening porthole
- 1 hull fixe window in Plexiglas white silkscreen printing

### **AFT AND FORWARD BATHROOM**

- Synthetic resin countertop and washbasin
- Hot/cold mixer tap
- High cupboards 2 doors with mirror
- Separate shower with Plexiglas door
- Composite shower grating
- Big size manual toilet
- 1 opening deck hatch

### **FORWARD CABIN**

- 1 double bed with lateral access (2.05 x 1.42 m)
- 1 under bed drawer
- 1 large headboard mirror
- 1 cupboard with wardrobe (upper part) and shelves (lower part) – inboard side
- 1 storage niche with on central shelf – outboard side
- Bookshelves on 2 levels
- 1 opening deck hatch
- 1 opening porthole
- 1 hull fixe window in Plexiglas white silkscreen printing

## STARBOARD HULL

---

Identical to the starboard hull



162, quai de Brazza  
CS 81217  
33072 Bordeaux Cedex - France  
Tél. 33 + (0) 557 80 92 80  
E-mail : [info@cata-lagoon.com](mailto:info@cata-lagoon.com)  
**[www.cata-lagoon.com](http://www.cata-lagoon.com)**